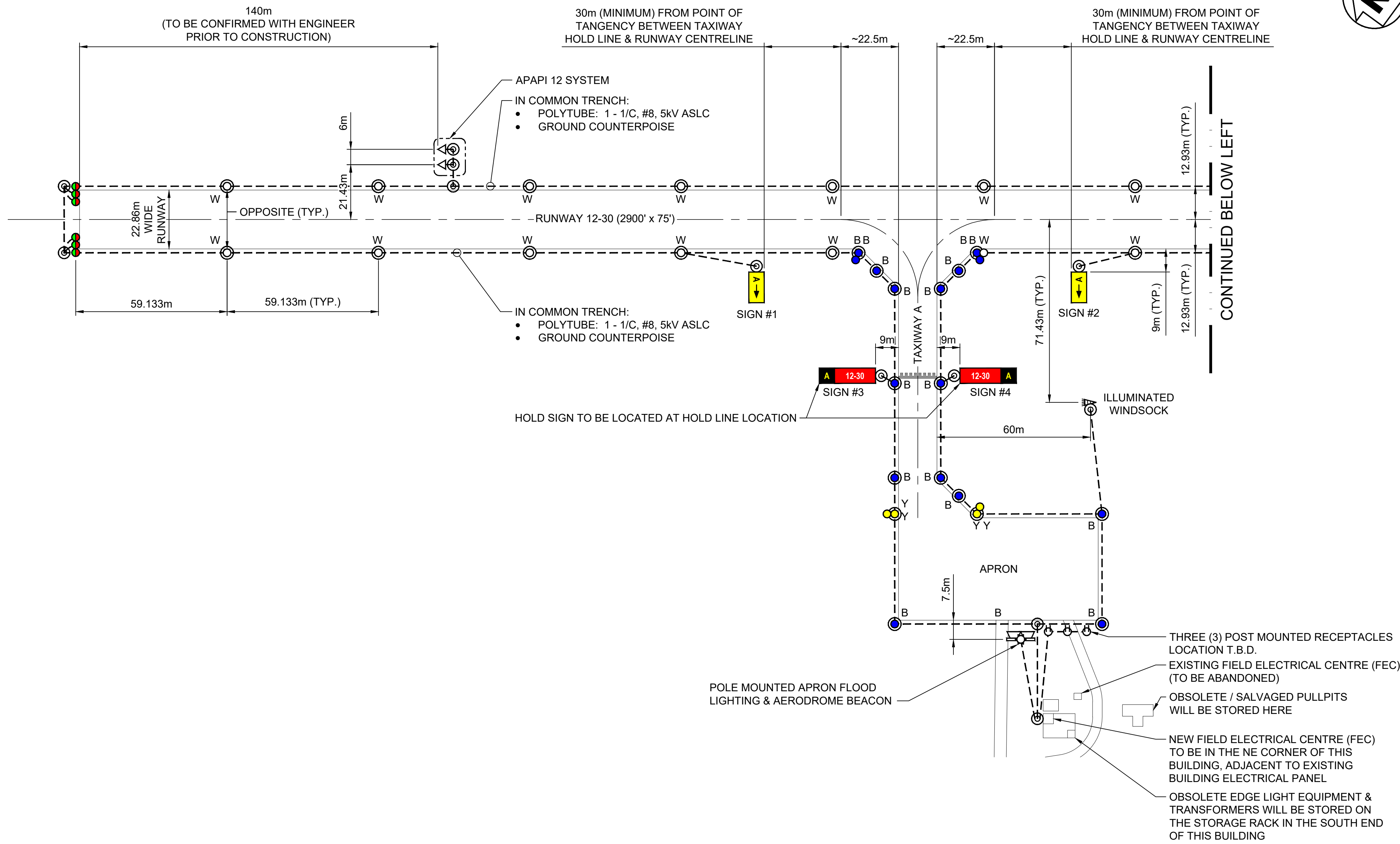
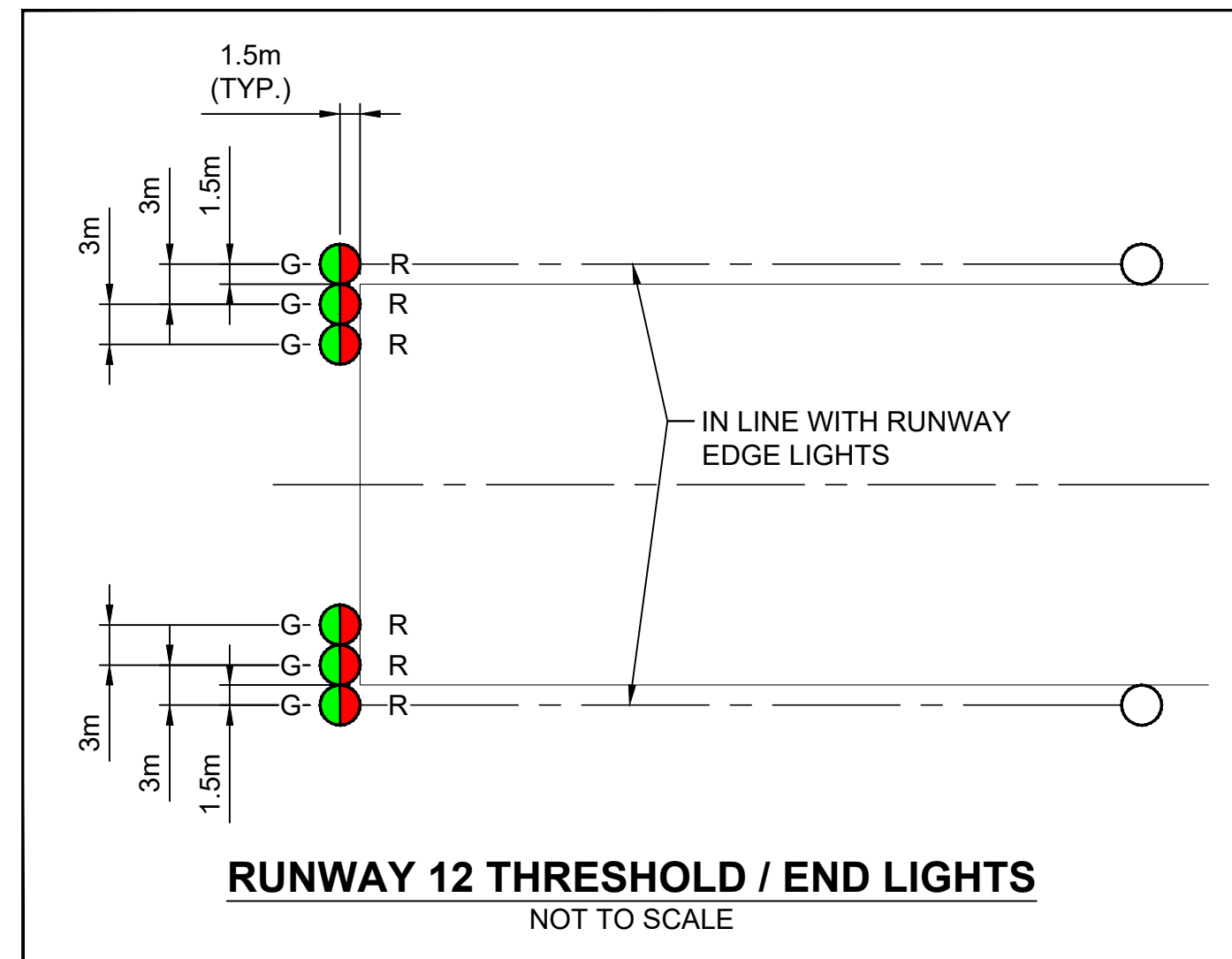


- GENERAL NOTES:**
- DRAWINGS BASED ON AERIAL PHOTOS AND IS CONCEPTUAL ONLY.
 - THIS DRAWING IS NOT TO BE USED FOR CONSTRUCTION PURPOSES UNTIL REVISION NOTED "ISSUED FOR CONSTRUCTION".
 - ALL EXISTING SUB-SURFACE UTILITIES WITHIN CONSTRUCTION LIMITS TO BE LOCATED AND PROTECTED DURING CONSTRUCTION.
 - INSTALLATION WILL COMPLY WITH:
 - CANADIAN ELECTRICAL CODE, C22.1 (LATEST EDITION)
 - TP312, 5TH EDITION



LEGEND

- WHITE RUNWAY EDGE LIGHT - PULLPIT MOUNTED
- WHITE RUNWAY EDGE LIGHT - STAKE MOUNTED
- BLUE TAXIWAY / APRON EDGE LIGHT - PULLPIT MOUNTED
- BLUE TAXIWAY / APRON EDGE LIGHT - STAKE MOUNTED
- YELLOW APRON EDGE LIGHT - PULLPIT MOUNTED
- YELLOW APRON EDGE LIGHT - STAKE MOUNTED
- RED / GREEN END / THRESHOLD LIGHT - STAKE MOUNTED (GREEN TO FACE APPROACH)
- △ ABBREVIATED PRECISION APPROACH PATH INDICATOR (APAPI)
- ▲ ILLUMINATED WINDSOCK
- A 12-30 RUNWAY HOLD SIGN
- A TAXIWAY TURN-OFF SIGN
- APRON FLOOD LIGHT
- ☆ AERODROME BEACON
- ⊕ 15A RECEPTACLE
- ⊙ PULLPIT
- - - CABLE / CONDUIT

NEW AIRFIELD SIGN SCHEDULE						
SIGN / DTG NO.	SIGN FACE	CHARACTER HEIGHT (mm)	BACKGROUND COLOUR	CHARACTER COLOUR	CCT TO CONNECT TO	NOTES
SIGN #1	A →	300	YELLOW	BLACK	EDGE LIGHT CCT	-
SIGN #2	← A	300	YELLOW	BLACK	EDGE LIGHT CCT	-
SIGN #3	12-30 A	300 300	RED BLACK	WHITE YELLOW	EDGE LIGHT CCT	-
SIGN #4	A 12-30	300 300	BLACK RED	YELLOW WHITE	EDGE LIGHT CCT	-

NOTES

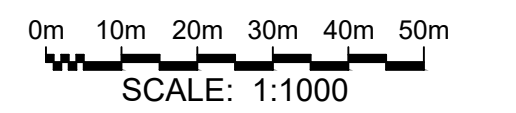
- PERPENDICULAR DISTANCE FROM DEFINED TAXIWAY EDGE TO NEAR SIDE OF SIGN TO BE BETWEEN 5 - 11m.
- PERPENDICULAR DISTANCE FROM DEFINED RUNWAY EDGE TO NEAR SIDE OF SIGN TO BE BETWEEN 3 - 11m.

APAPI 12 AND APAPI 30 CONSTRUCTION NOTES

- APAPI LOCATIONS SHOWN ARE PRELIMINARY AND ARE TO BE CONFIRMED BY ENGINEER PRIOR TO CONSTRUCTION.
- SURVEY RUNWAY CENTRELINER ON APAPI END FROM THRESHOLD TO 200m ON RUNWAY AT ~25m INTERVALS. PROVIDE ELEVATION DATA TO ENGINEER. THIS INFORMATION WILL BE USED TO FINALIZE APAPI LOCATION.
- ONCE THE APAPI LOCATION IS FINALIZED, THE CONTRACTOR SHALL SURVEY ELEVATIONS FOR APAPI BASES (GROUND ELEVATIONS AT APAPI OFFSETS) AND RUNWAY EDGE / CROWN / CENTRELINER ELEVATION AT APAPI STATION. PROVIDE INFORMATION TO ENGINEER. ENGINEER WILL THEN PROVIDE FINAL APAPI MOUNTING HEIGHT REQUIREMENTS.
- MOUNT NEW APAPI LIGHT UNITS ON PILE CAP WITH SCREW ANCHORS TO ELEVATIONS PROVIDED BY ENGINEER.
- AIM AND CALIBRATE APAPI UNITS PER MANUFACTURER'S INSTRUCTIONS AND TO MEET REQUIRED GLIDE SLOPE ANGLES.

EDGE LIGHT CONSTRUCTION NOTES

- INSTALL NEW PULLPIT, FIXTURE MOUNTED ON PULLPIT LID, TRANSFORMER, SECONDARY CORD AND ALL REQUIRED ACCESSORIES. SOME FIXTURES, WHERE INDICATED, ARE TO BE MOUNTED ON STAKES.
- NEW PRIMARY CABLING / DUCTS TO BE INSTALLED IN NEW TRENCH.
- SUPPLY, INSTALL AND CONNECT NEW GROUND ROD IN EVERY FOURTH PULLPIT AND CONNECT TO GROUND COUNTERPOISE.



REVISION				
No.	Description	By	Appd.	Date
0	ISSUED FOR 90% REVIEW	KLL	RG	2020/09/...

SEALS:

PRELIMINARY FOR INTERNAL REVIEW ONLY

CLIENT:

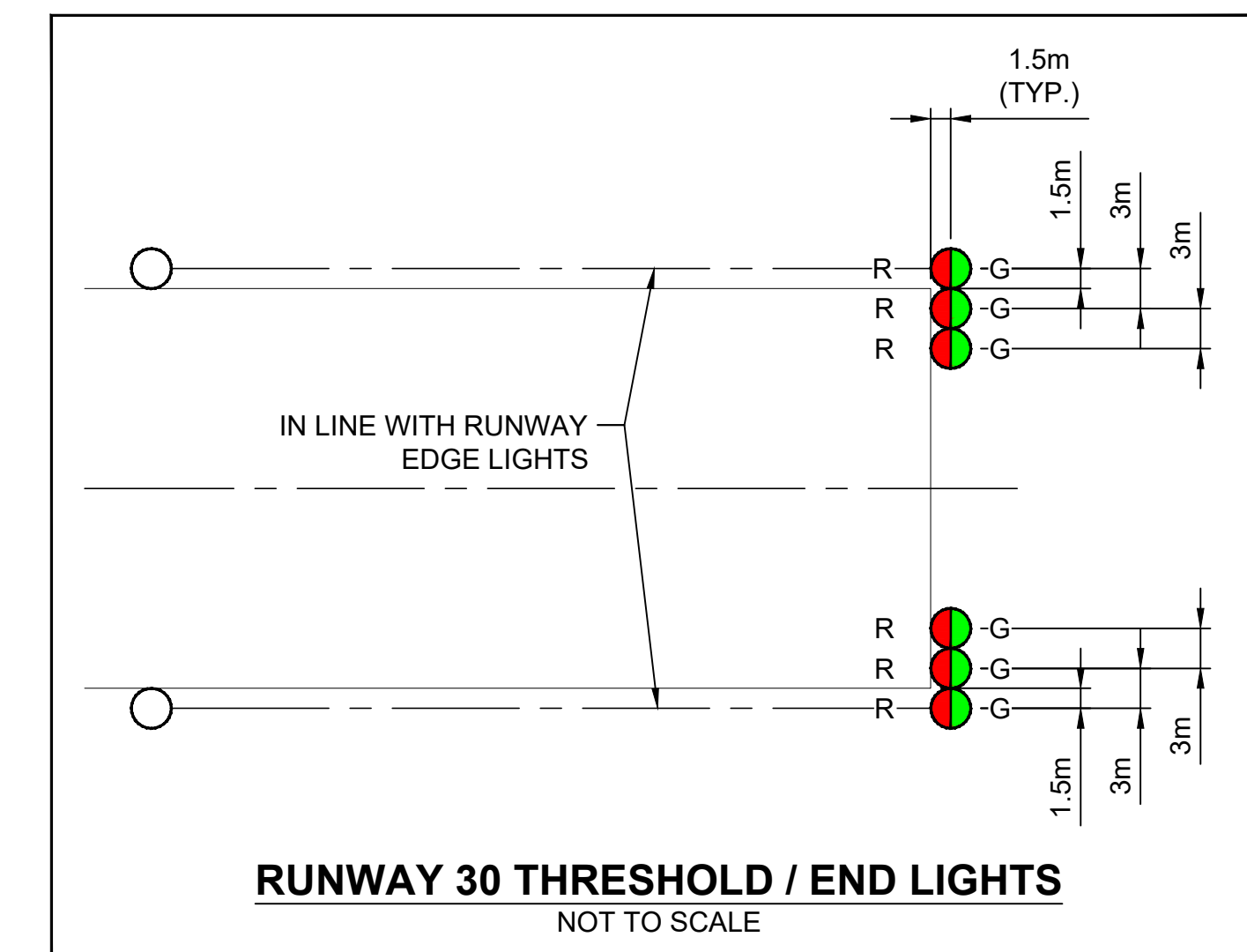
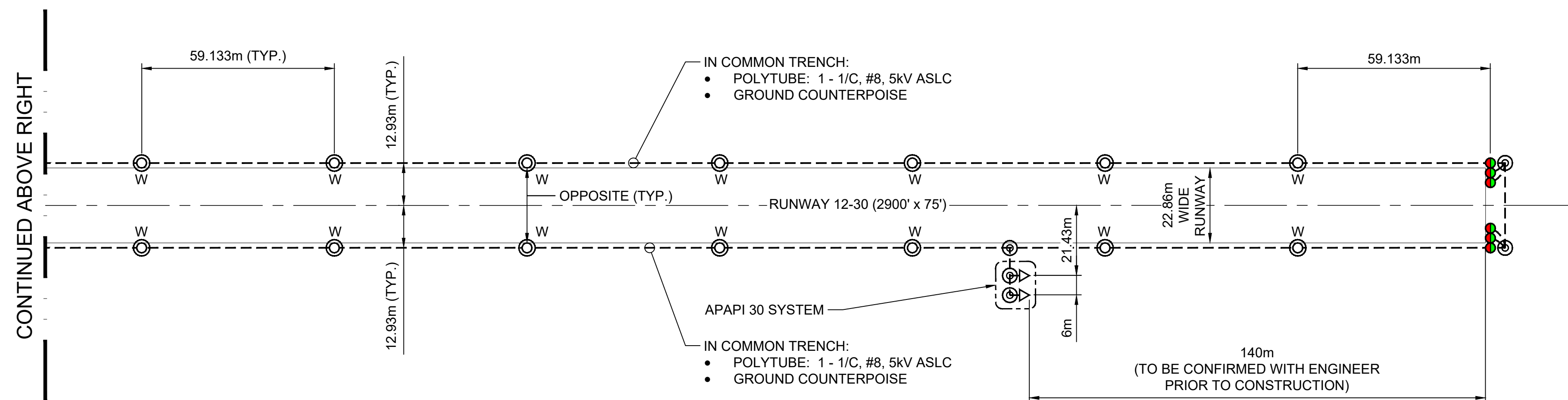
PROJECT: AIRFIELD ELECTRICAL REHABILITATION

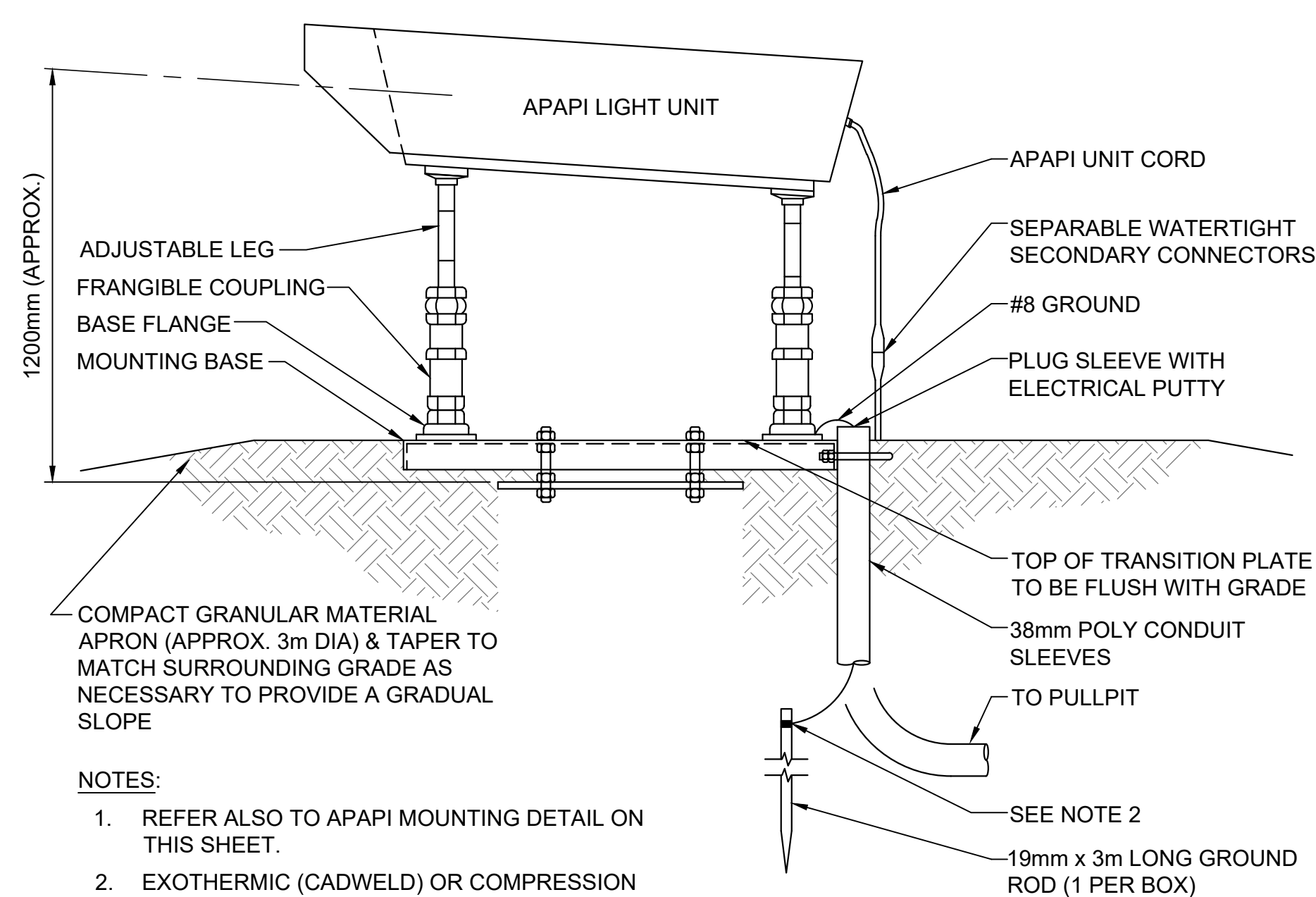
LOCATION:

TITLE: ELECTRICAL LAYOUT

PROJECT NO: CEL6-001 SCALE: AS NOTED

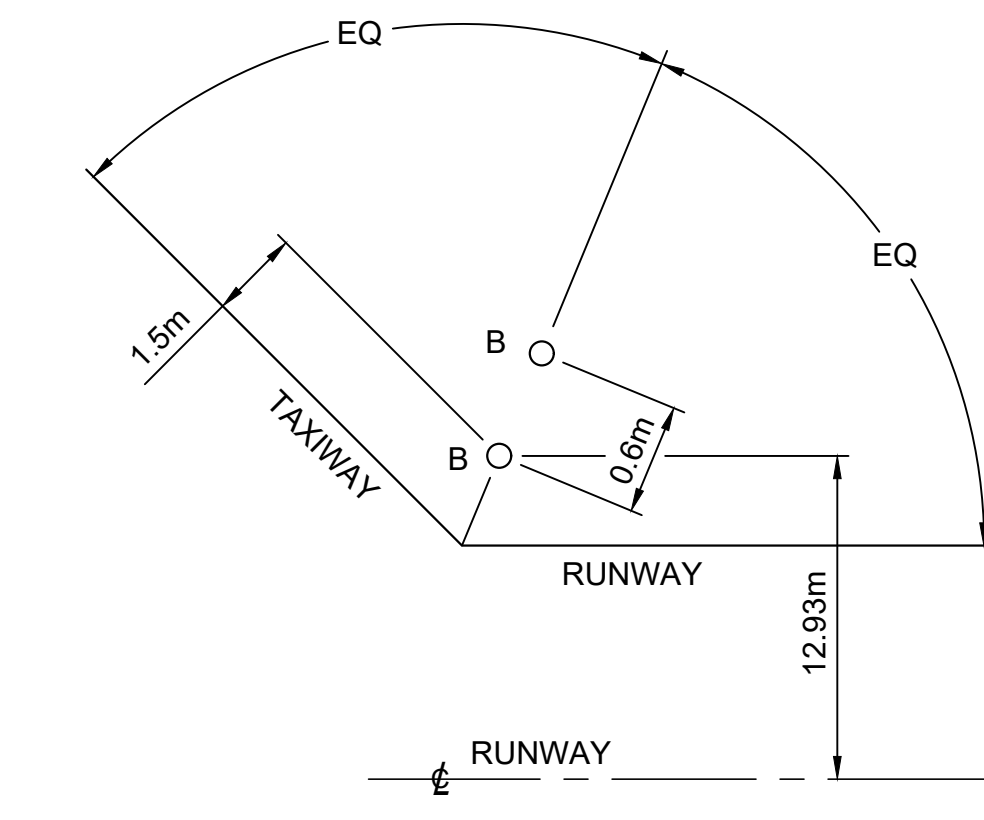
DRAWING NO: E1 REVISION: 0



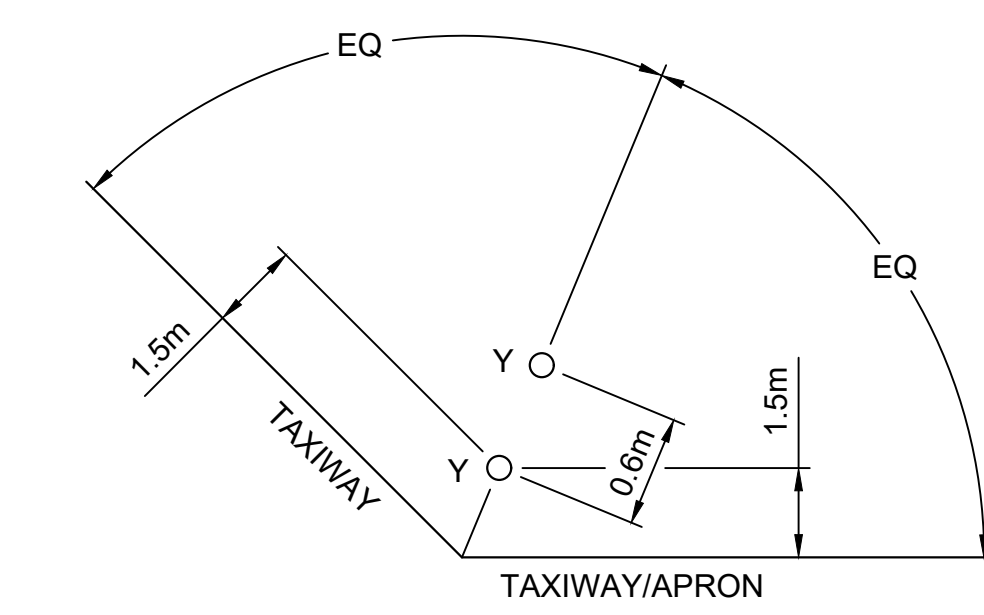


1 APAPI UNIT INSTALLATION

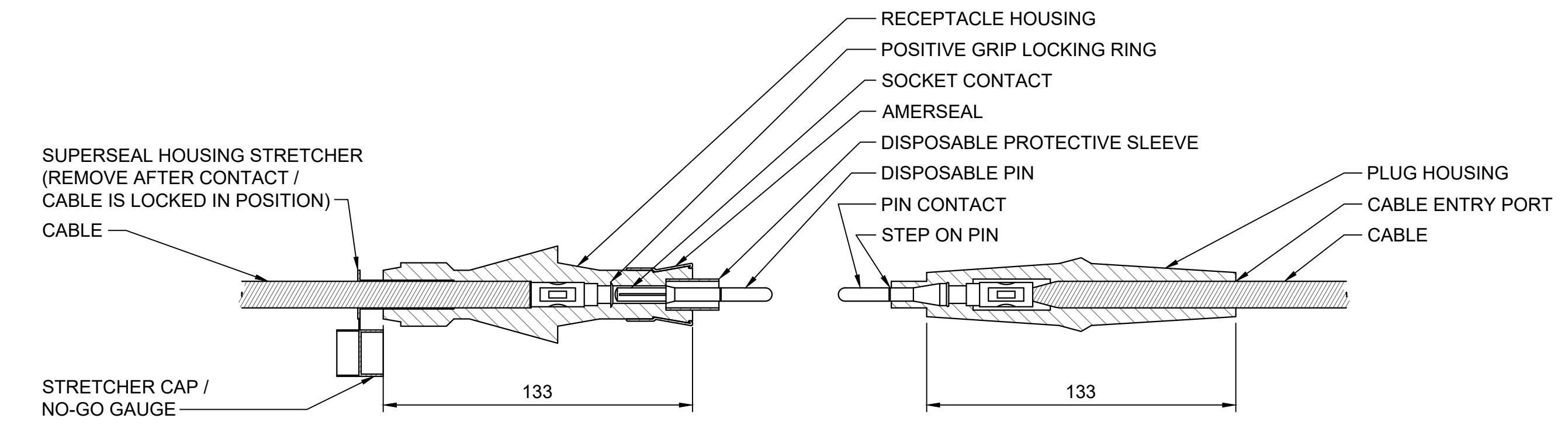
- NOTES:
- REFER ALSO TO APAPI MOUNTING DETAIL ON THIS SHEET.
 - EXOTHERMIC (CADWELD) OR COMPRESSION CONNECTION. THREADED CONNECTIONS ARE NOT PERMITTED.



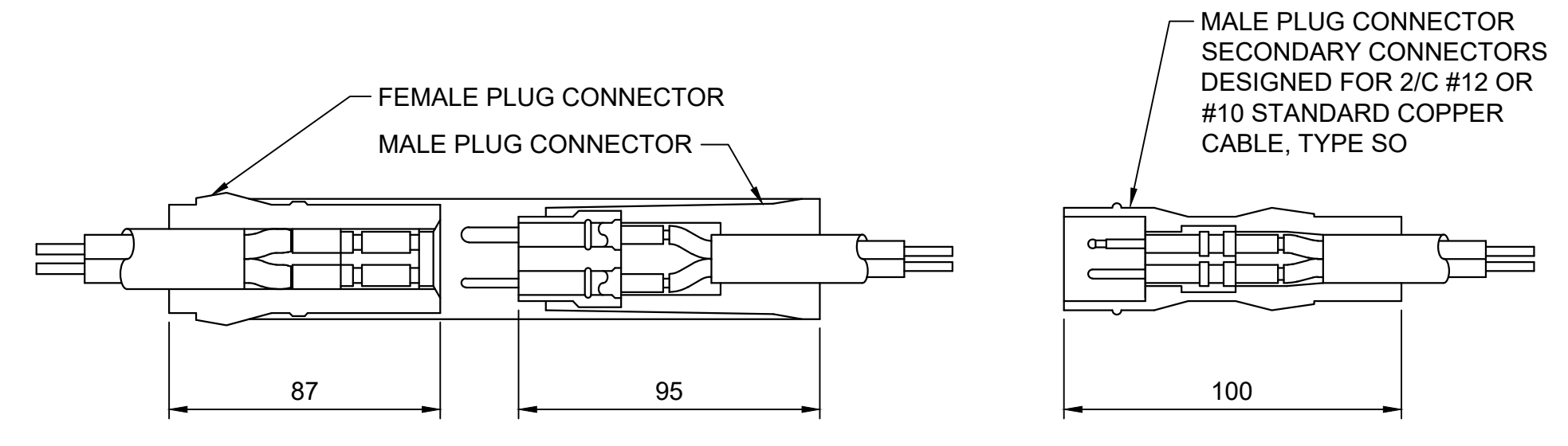
2 RUNWAY / TAXIWAY JUNCTION



3 TAXIWAY / APRON JUNCTION

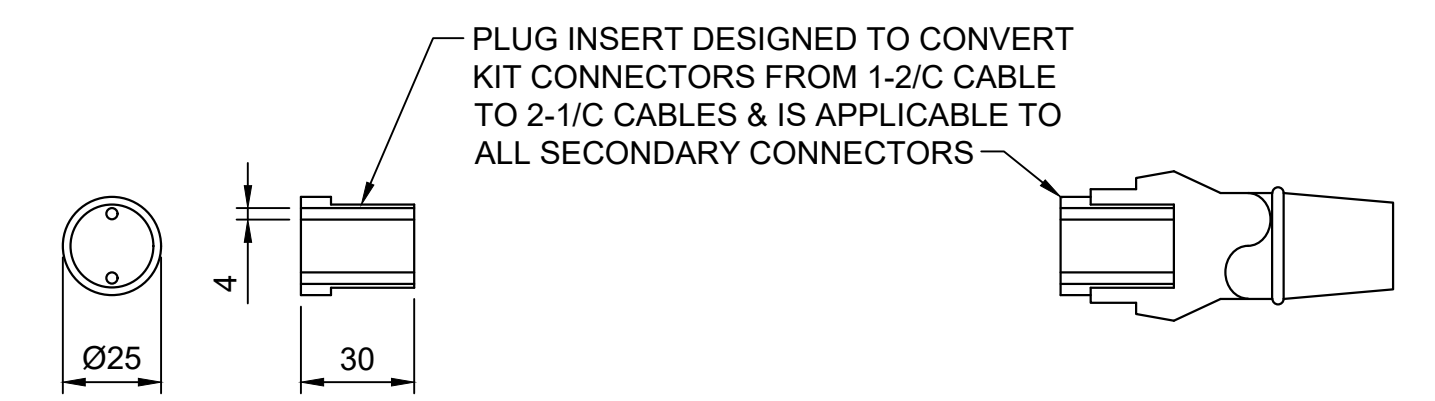


4 TYPICAL PRIMARY CONNECTOR DETAIL



ELEVATION

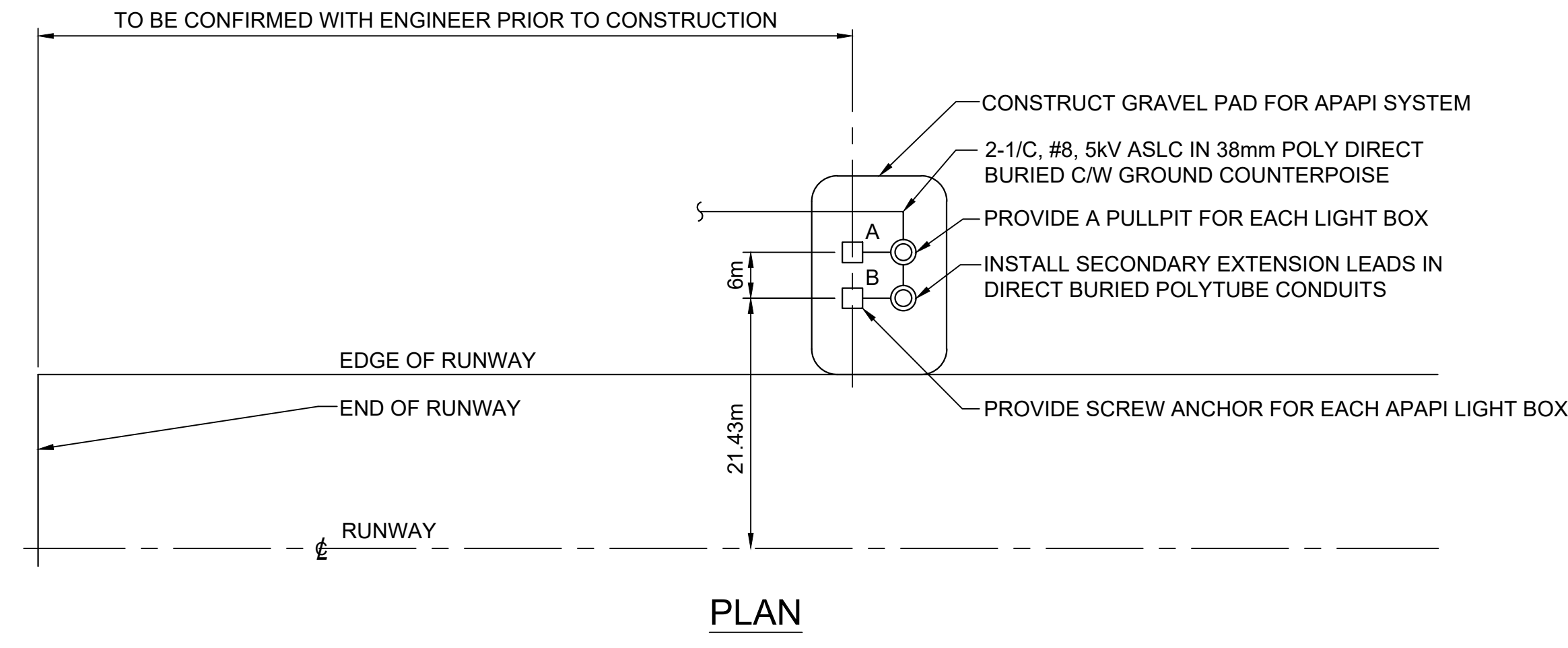
MALE PLUG CONNECTOR



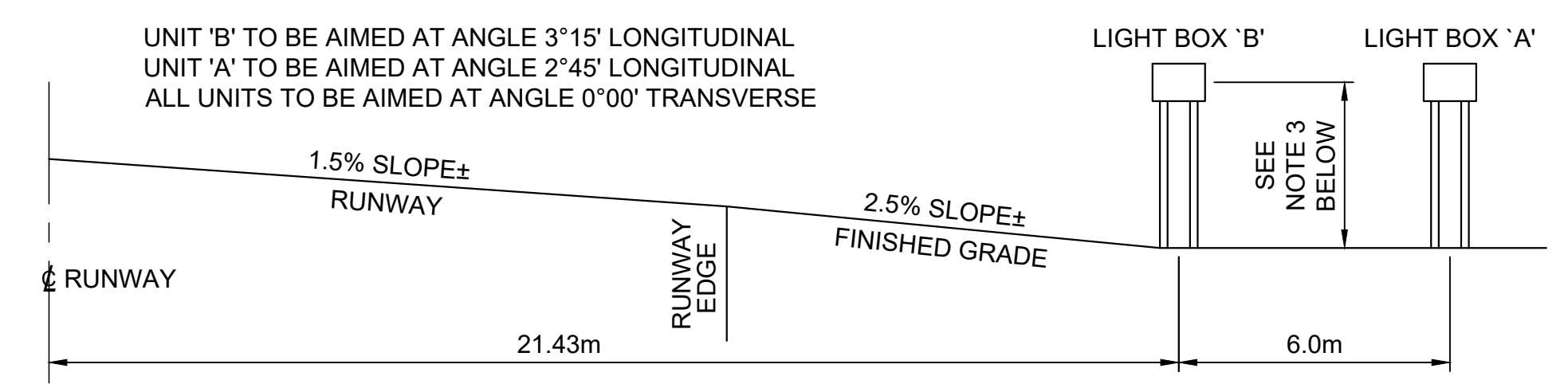
PLUG INSERT

PLUG INSERT INSTALLATION

5 TYPICAL SECONDARY CONNECTOR DETAIL



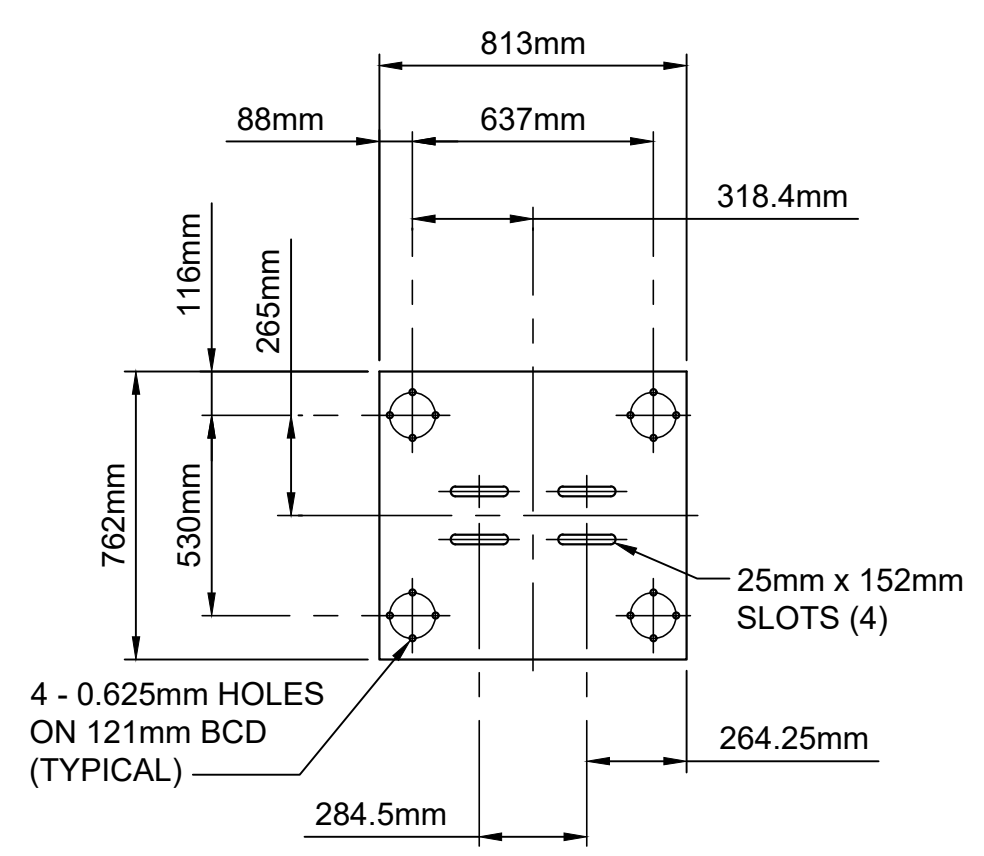
PLAN



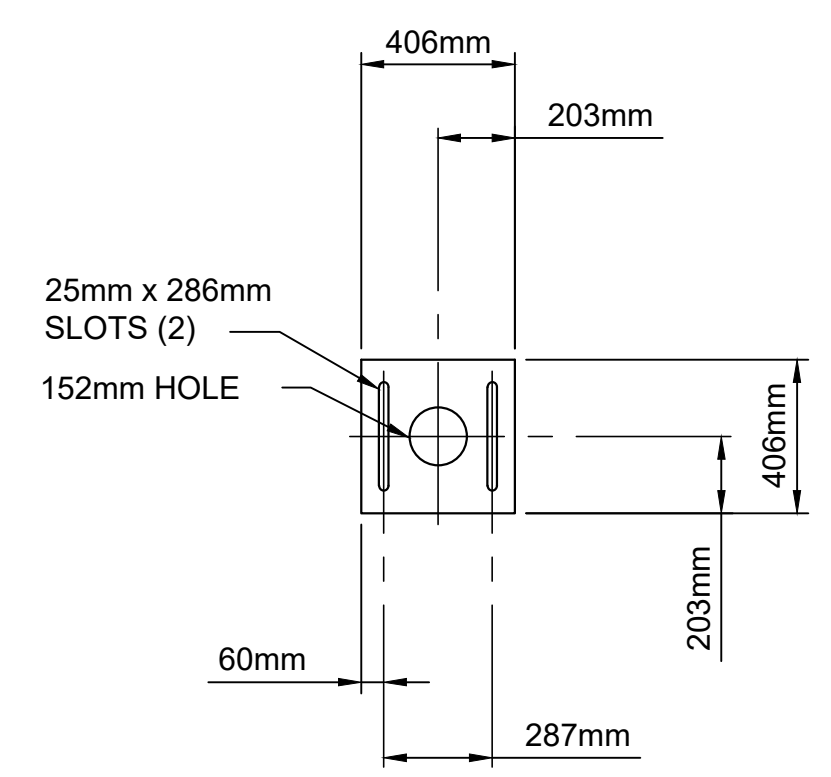
ELEVATION

- NOTES:
- REFER ALSO TO INSTALLATION AND BASE DETAILS.
 - ALL DIMENSIONS ARE TO CENTRE LINES OF LIGHT UNITS.
 - FINAL INSTALLATION HEIGHTS AND EXACT LOCATION TO BE PROVIDED BY ENGINEER DURING CONSTRUCTION.

6 APAPI UNIT LAYOUT DETAIL

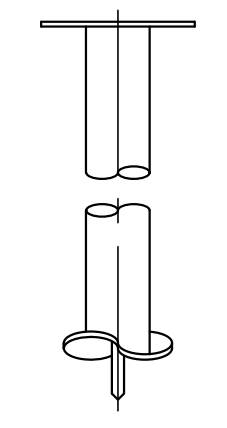


APAPI TRANSITION PLATE



TOP PLATE

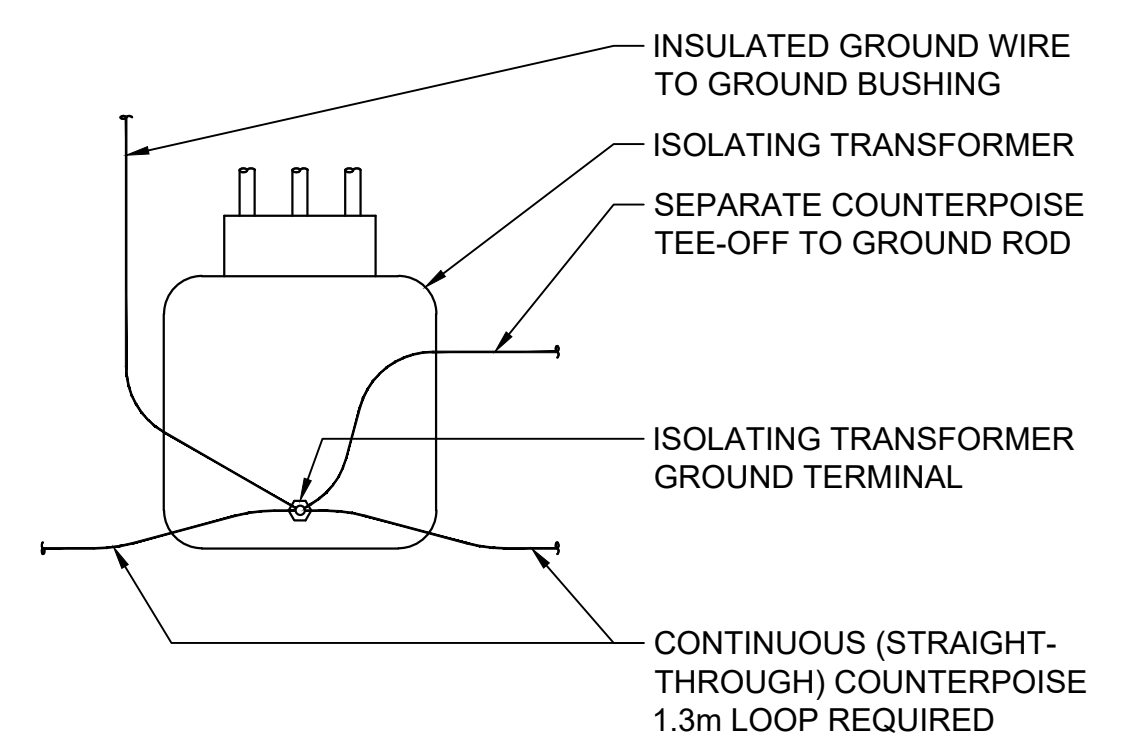
- NOTE: AS REQUIRED, SUPPLY & INSTALL NEW APAPI TRANSITION PLATE. DIMENSIONS ABOVE ARE SCHEMATIC & CONTRACTOR TO VERIFY ACTUAL APAPI TRANSITION PLATE / MOUNTING BASE / TOP PLATE DIMENSIONS / DETAILS.



FOUNDATION ANCHOR

- NOTES:
- TRANSITION PLATE TO BE HOT DIPPED GALVANIZED STEEL WITH THICKNESS OF 12.5mm.
 - TOP PLATE TO BE HOT DIPPED GALVANIZED STEEL WITH THICKNESS OF 12.5mm.
 - FOUNDATION ANCHOR TO BE 4.57m LONG 150mm SCHEDULE 40 PIPE, C/W 287mm HELIX AND 32mm x 32mm SQUARE STARTER POINT 150mm LONG, HOT DIPPED GALVANIZED AFTER WELDING.

7 APAPI BASE DETAIL

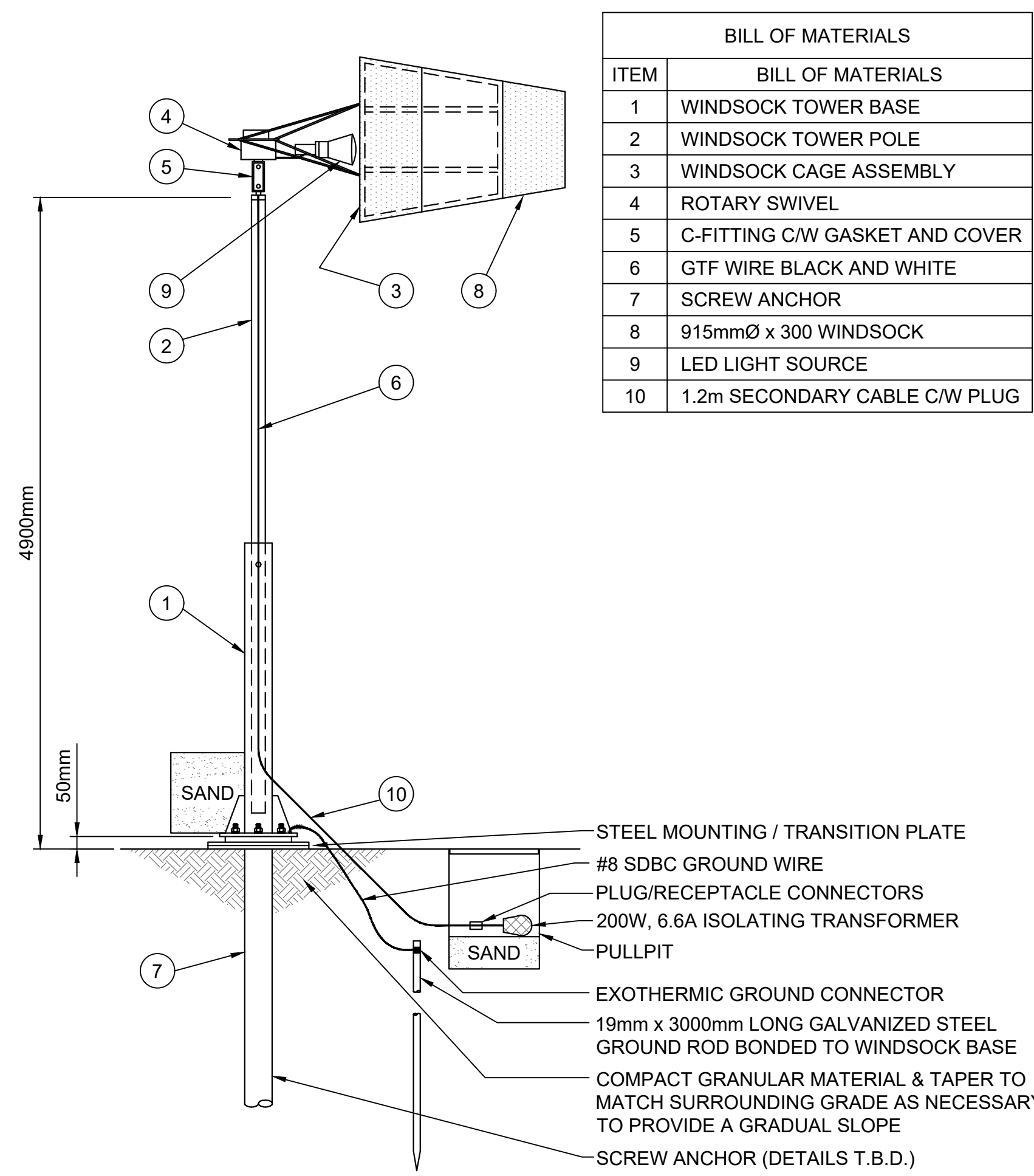


8 ISOLATING TRANSFORMER AND COUNTERPOISE GROUNDING

- GENERAL NOTES:**
- DRAWINGS BASED ON AERIAL PHOTOS AND IS CONCEPTUAL ONLY.
 - THIS DRAWING IS NOT TO BE USED FOR CONSTRUCTION PURPOSES UNTIL REVISION NOTED "ISSUED FOR CONSTRUCTION".
 - ALL EXISTING SUB-SURFACE UTILITIES WITHIN CONSTRUCTION LIMITS TO BE LOCATED AND PROTECTED DURING CONSTRUCTION.
 - INSTALLATION WILL COMPLY WITH:
 - CANADIAN ELECTRICAL CODE, C22.1 (LATEST EDITION)
 - TP312, 5TH EDITION

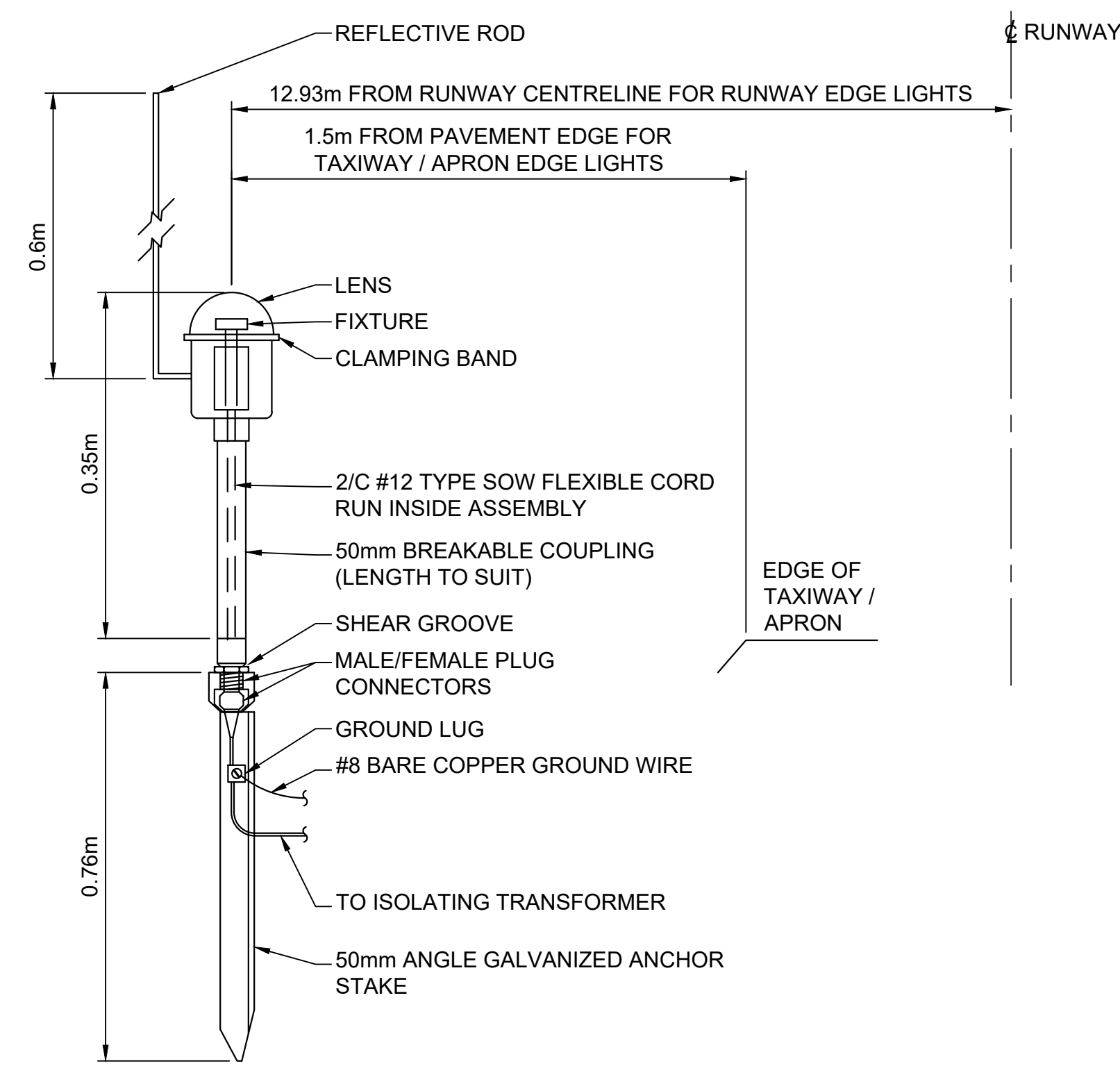
REVISION				
No.	Description	By	Appd.	Date
0	ISSUED FOR 90% REVIEW	KLL	RG	2020/09/

PRELIMINARY FOR INTERNAL REVIEW ONLY



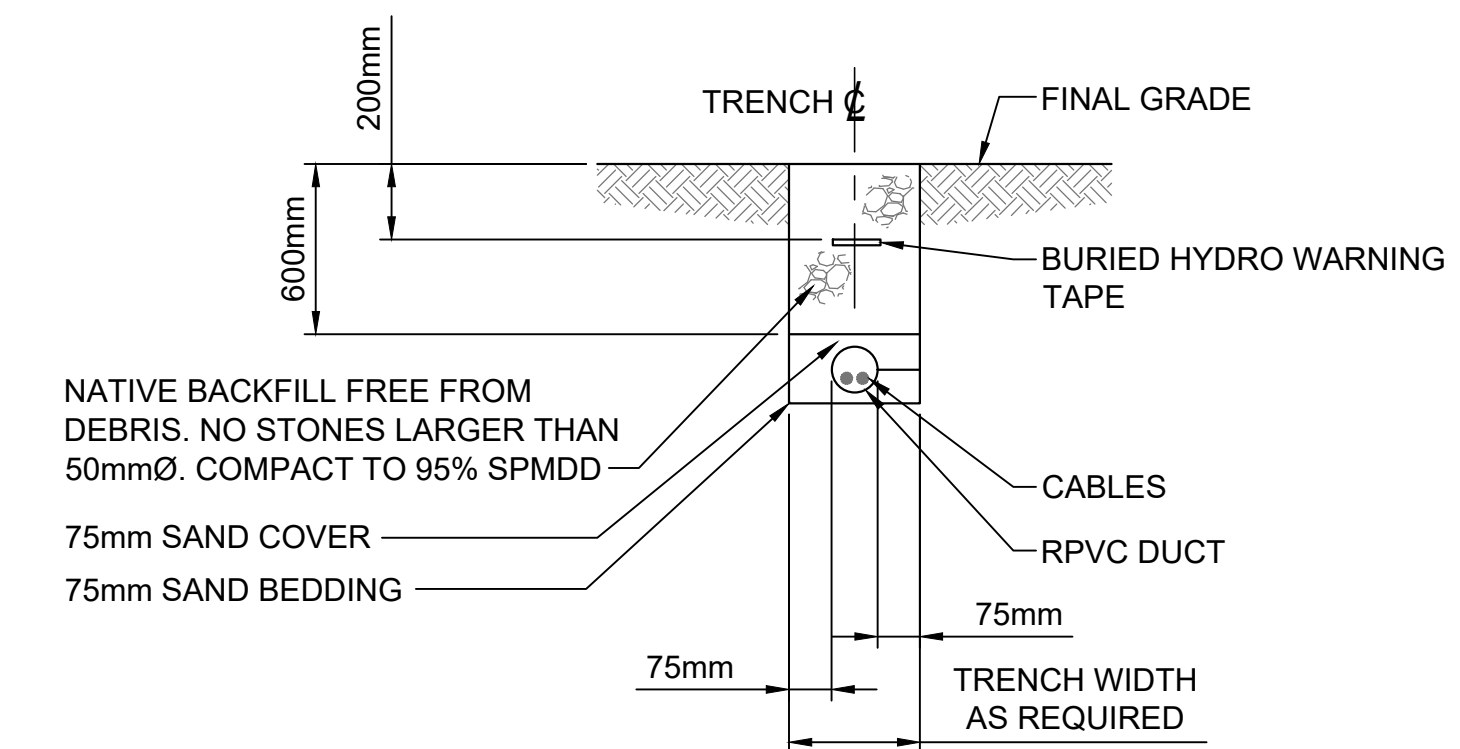
BILL OF MATERIALS	
ITEM	BILL OF MATERIALS
1	WINDSOCK TOWER BASE
2	WINDSOCK TOWER POLE
3	WINDSOCK CAGE ASSEMBLY
4	ROTARY SWIVEL
5	C-FITTING C/W GASKET AND COVER
6	GTF WIRE BLACK AND WHITE
7	SCREW ANCHOR
8	915mmØ x 300 WINDSOCK
9	LED LIGHT SOURCE
10	1.2m SECONDARY CABLE C/W PLUG

9 WINDCONE INSTALLATION



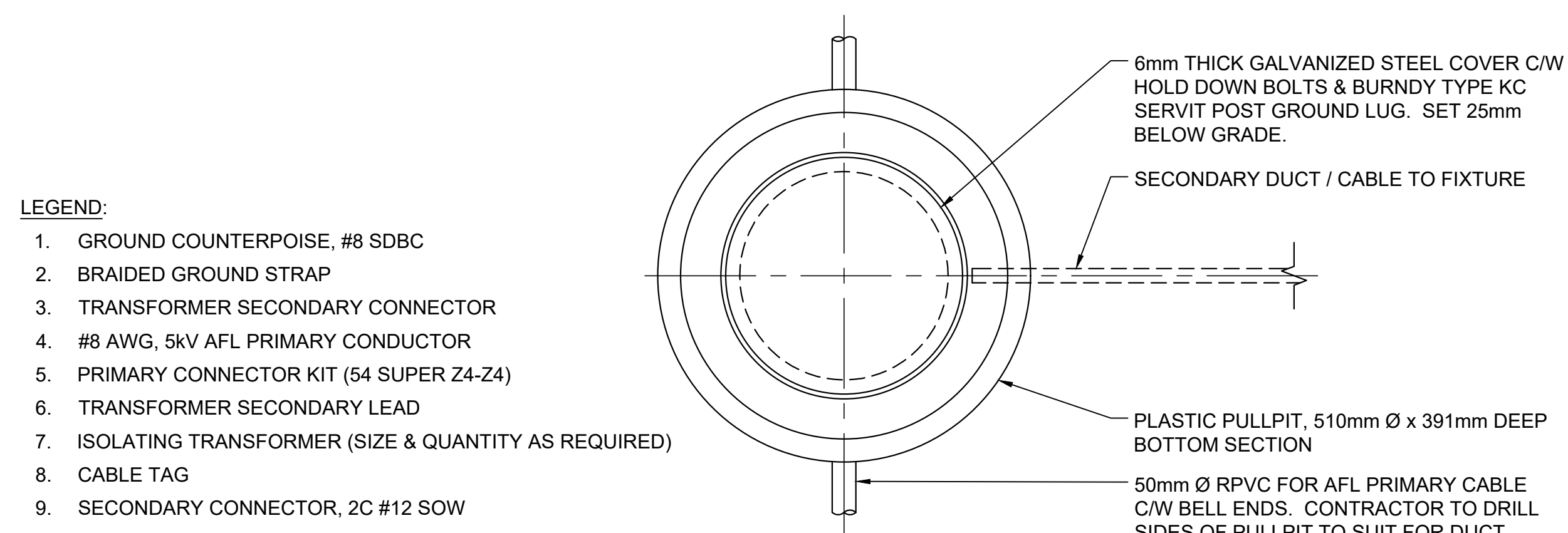
- NOTES:
- PULLPITS (NOT SHOWN) TO BE WEST COAST ENGINEERING 450mm DEEP C/W STEEL COVER AND GROUND POST ON COVER.
 - THIS DETAIL TO BE FOR EDGE LIGHT INSTALLATION IN CLOSE PROXIMITY TO PULLPIT MOUNTED FIXTURES (EG: DOUBLE BLUES, DOUBLE YELLOWS).

10 RUNWAY / TAXIWAY / APRON STAKE MOUNTED EDGE LIGHT INSTALLATION

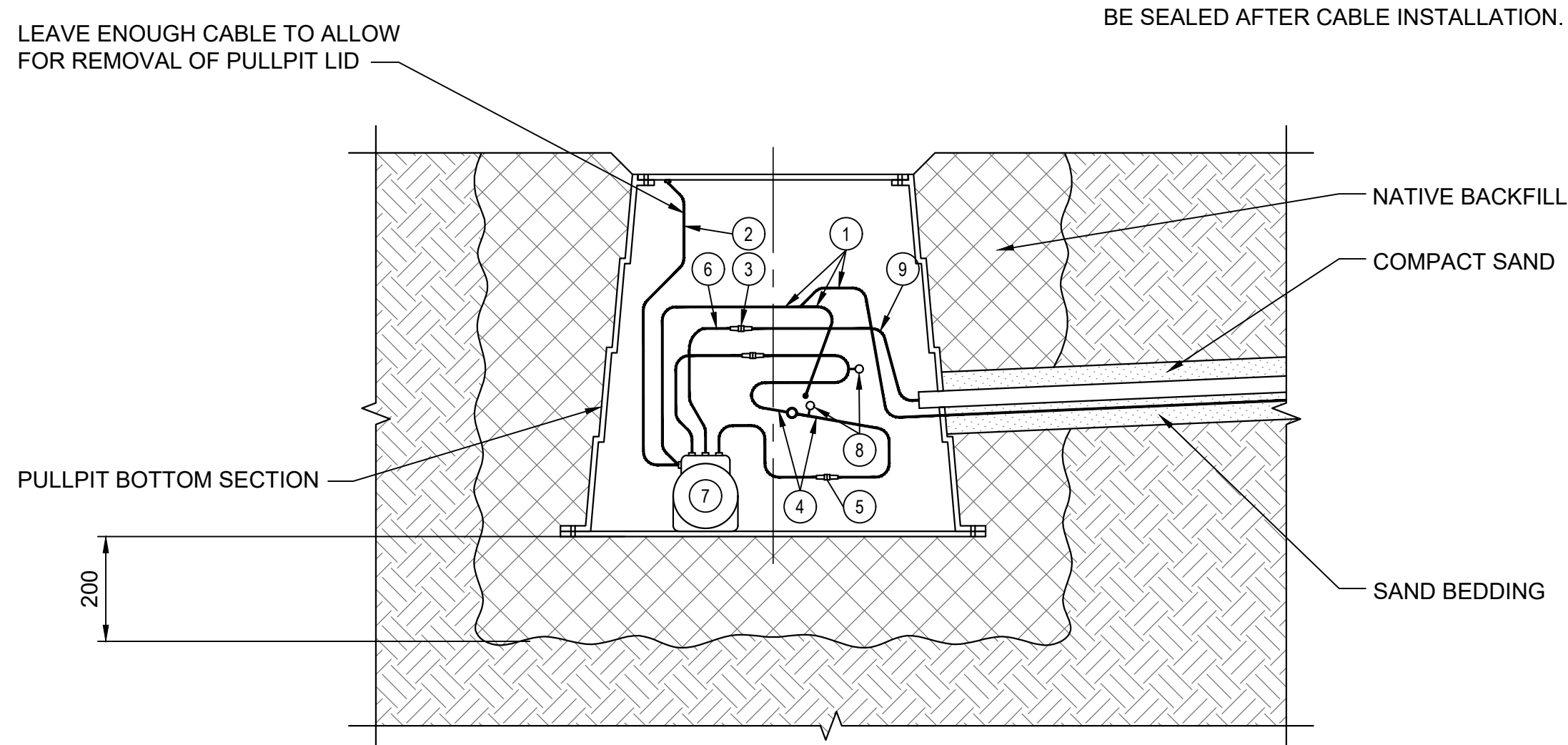


- NOTES:
- MAINTAIN 75mm CLEARANCE BETWEEN CONDUCTORS AND SIDES OF TRENCH.
 - RESTORE TRENCH SURFACE BY RAKING TO MATCH SURROUNDING GRADE.
 - MAINTAIN 1.5m CLEARANCE FROM EXISTING CABLES.
 - REMOVE ALL STONES LARGER THAN 25mm.
 - MAINTAIN 75mm CLEARANCE BETWEEN ADJACENT CONDUCTORS / DUCTS IN COMMON TRENCH.

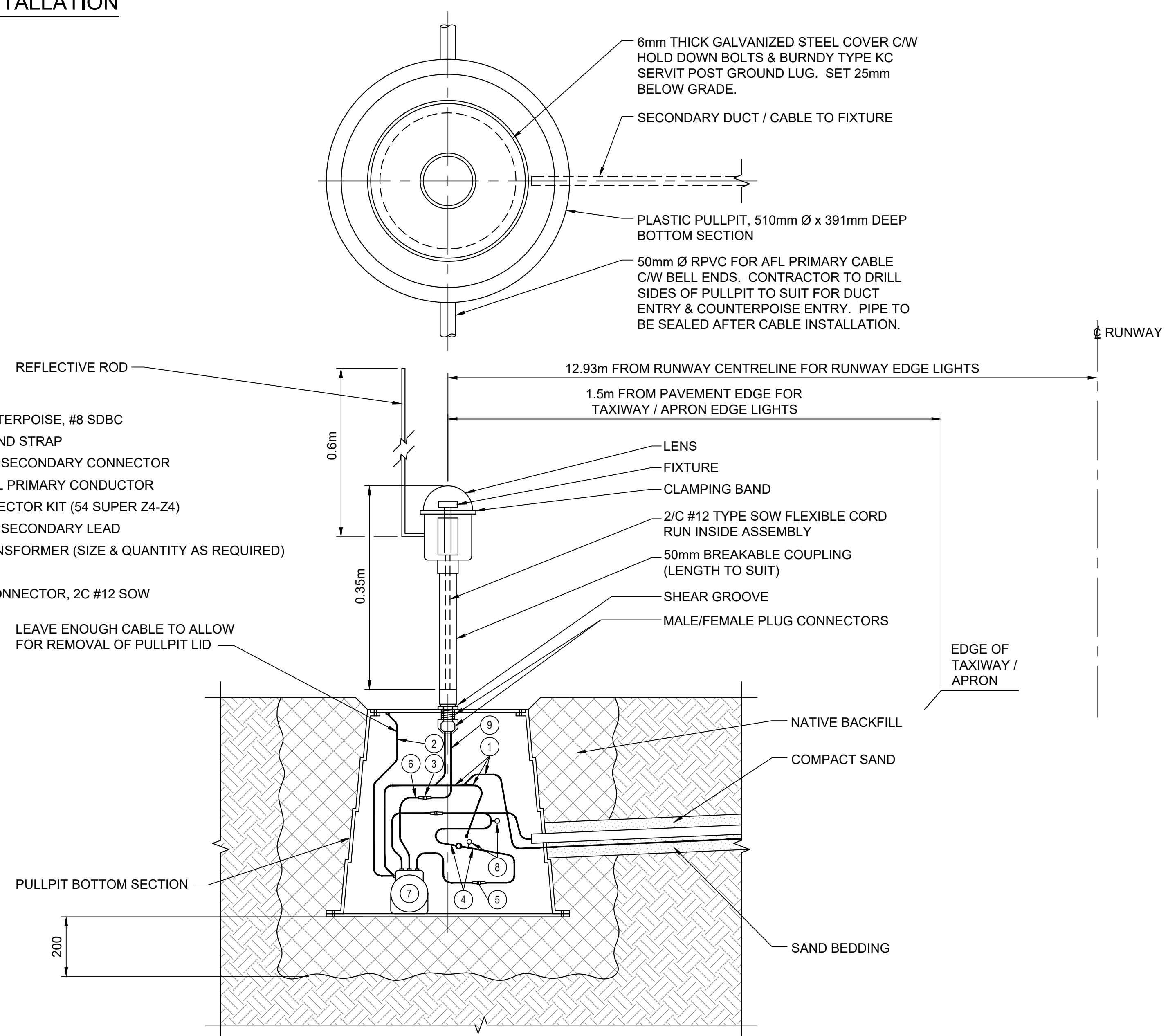
11 TRENCH PROFILE



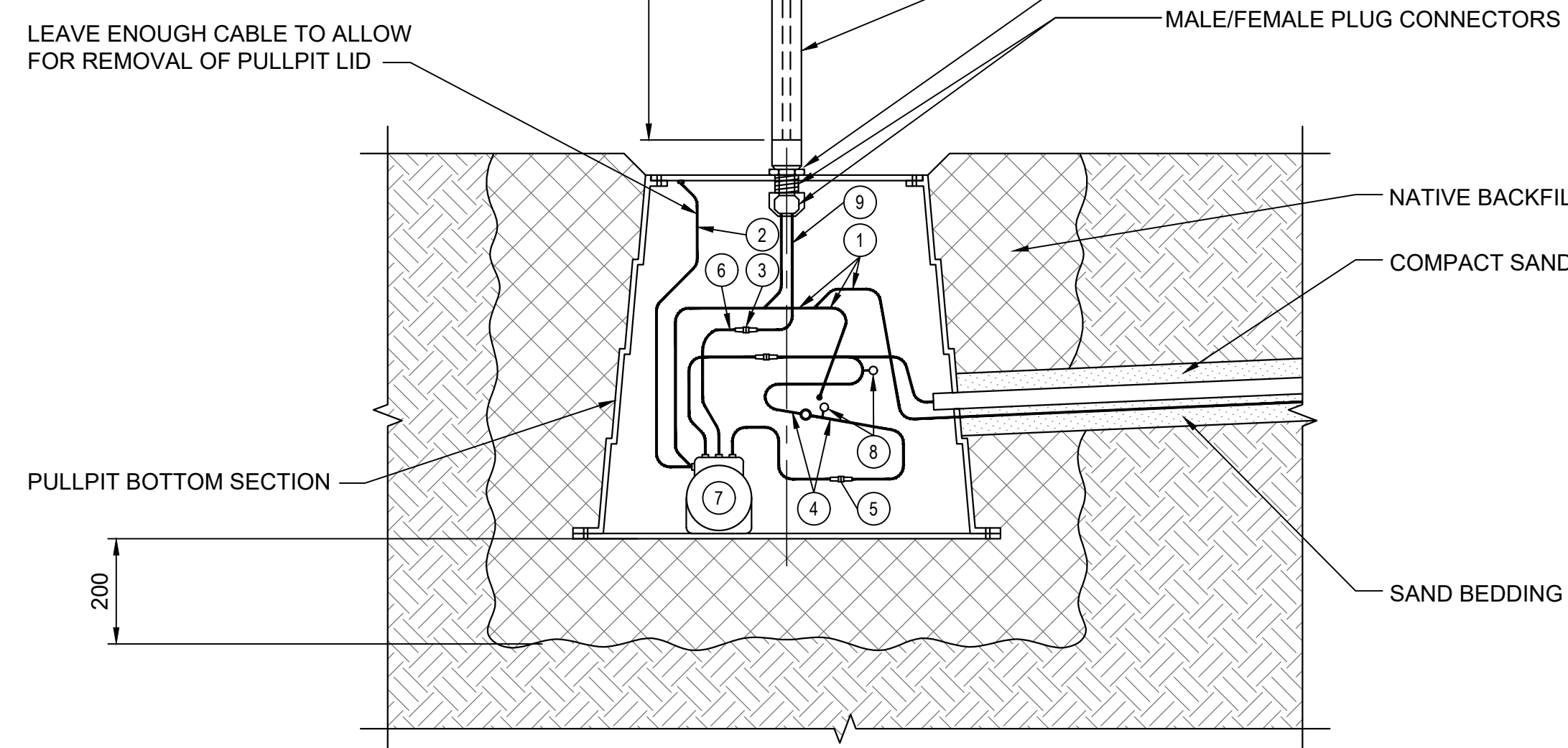
- LEGEND:
- GROUND COUNTERPOISE, #8 SDBC
 - BRAIDED GROUND STRAP
 - TRANSFORMER SECONDARY CONNECTOR
 - #8 AWG, 5kV AFL PRIMARY CONDUCTOR
 - PRIMARY CONNECTOR KIT (54 SUPER Z4-Z4)
 - TRANSFORMER SECONDARY LEAD
 - ISOLATING TRANSFORMER (SIZE & QUANTITY AS REQUIRED)
 - CABLE TAG
 - SECONDARY CONNECTOR, 2C #12 SOW



12 TYPICAL PULLPIT INSTALLATION



- LEGEND:
- GROUND COUNTERPOISE, #8 SDBC
 - BRAIDED GROUND STRAP
 - TRANSFORMER SECONDARY CONNECTOR
 - #8 AWG, 5kV AFL PRIMARY CONDUCTOR
 - PRIMARY CONNECTOR KIT (54 SUPER Z4-Z4)
 - TRANSFORMER SECONDARY LEAD
 - ISOLATING TRANSFORMER (SIZE & QUANTITY AS REQUIRED)
 - CABLE TAG
 - SECONDARY CONNECTOR, 2C #12 SOW



- NOTE:
- FOR DOUBLE LIGHT INSTALLATIONS IN CLOSE PROXIMITY (I.E. DOUBLE YELLOWS), IF ONE LIGHT IS TO BE MOUNTED ON A PULLPIT LID, THE OTHER ADJACENT LIGHT SHOULD BE STAKE MOUNTED TO ENSURE THAT THE 0.6m DISTANCE BETWEEN THE LIGHT UNITS CAN BE ACHIEVED.

13 RUNWAY / TAXIWAY / APRON PULLPIT MOUNTED EDGE LIGHT INSTALLATION

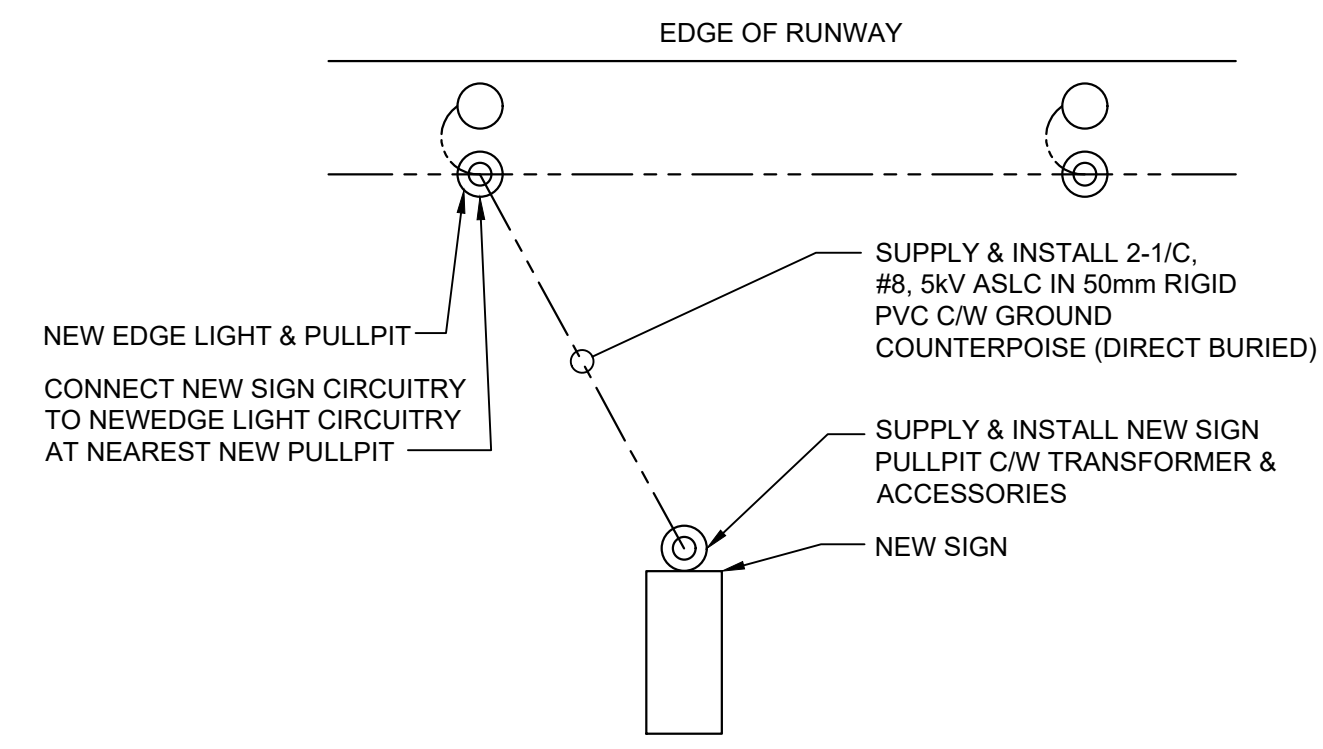
GENERAL NOTES:

- DRAWINGS BASED ON AERIAL PHOTOS AND IS CONCEPTUAL ONLY.
- THIS DRAWING IS NOT TO BE USED FOR CONSTRUCTION PURPOSES UNTIL REVISION NOTED "ISSUED FOR CONSTRUCTION".
- ALL EXISTING SUB-SURFACE UTILITIES WITHIN CONSTRUCTION LIMITS TO BE LOCATED AND PROTECTED DURING CONSTRUCTION.
- INSTALLATION WILL COMPLY WITH:
 - CANADIAN ELECTRICAL CODE, C22.1 (LATEST EDITION)
 - TP312, 5TH EDITION

REVISION			
No.	Description	By	Appd. Date
0	ISSUED FOR 90% REVIEW	KLL RG	2020/09/

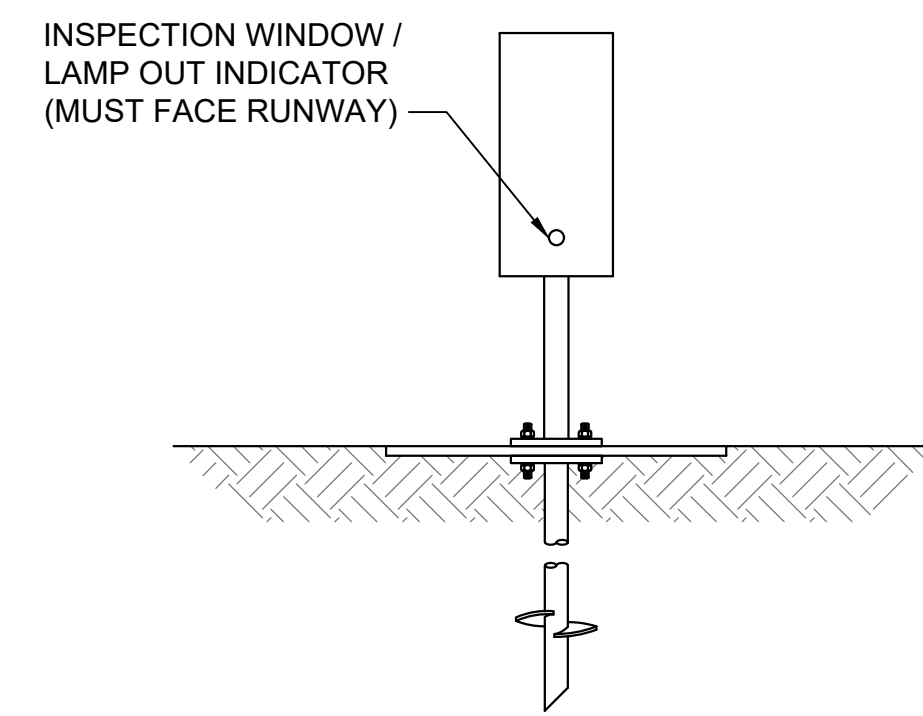
PRELIMINARY FOR INTERNAL REVIEW ONLY

CLIENT:
 PROJECT:
AIRFIELD ELECTRICAL REHABILITATION
 LOCATION:
 TITLE:
ELECTRICAL DETAILS SHEET 2 OF

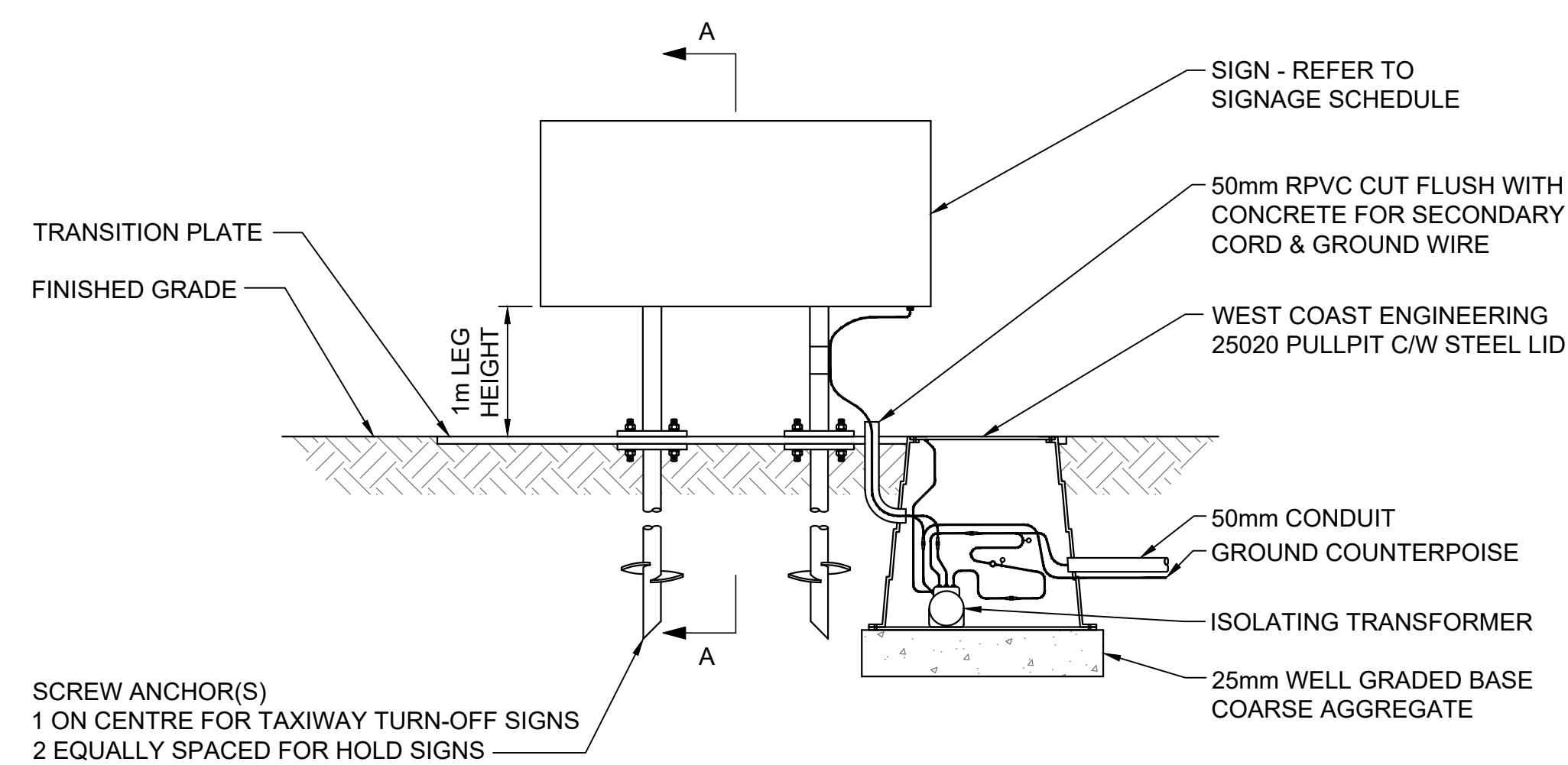


- NOTES:
1. INSTALL NEW SIGN AND CONNECT TO NEW CIRCUITRY IN NEW PULLPIT. SUPPLY, INSTALL AND CONNECT NEW GROUND ROD AS REQUIRED.
 2. INSTALL NEW SIGN PULLPIT. SUPPLY, INSTALL AND CONNECT NEW GROUND ROD.
 3. INSTALL NEW 5kV ASLC CIRCUITRY TO SIGN IN 50mm RIGID PVC.
 4. INSTALL NEW GROUND COUNTERPOISE TO SIGN AND CONNECT TO EDGE LIGHTING GROUND SYSTEM.
 5. PROVIDE NEW CONNECTOR KITS AND ACCESSORIES AS NECESSARY.
 6. INSPECTION WINDOW TO FACE RUNWAY.

14 TYPICAL SIGN INSTALLATION (PLAN VIEW)



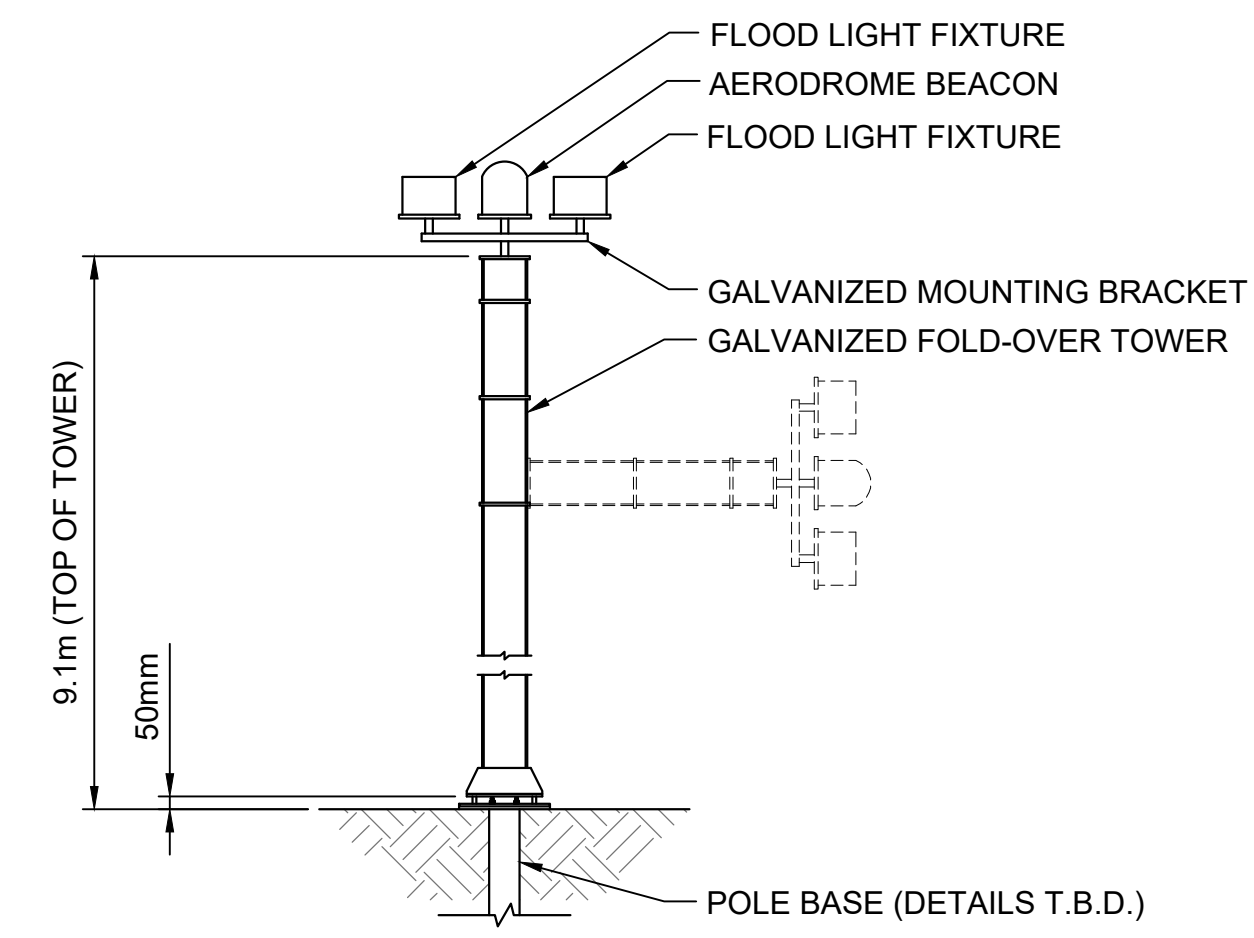
SECTION A-A



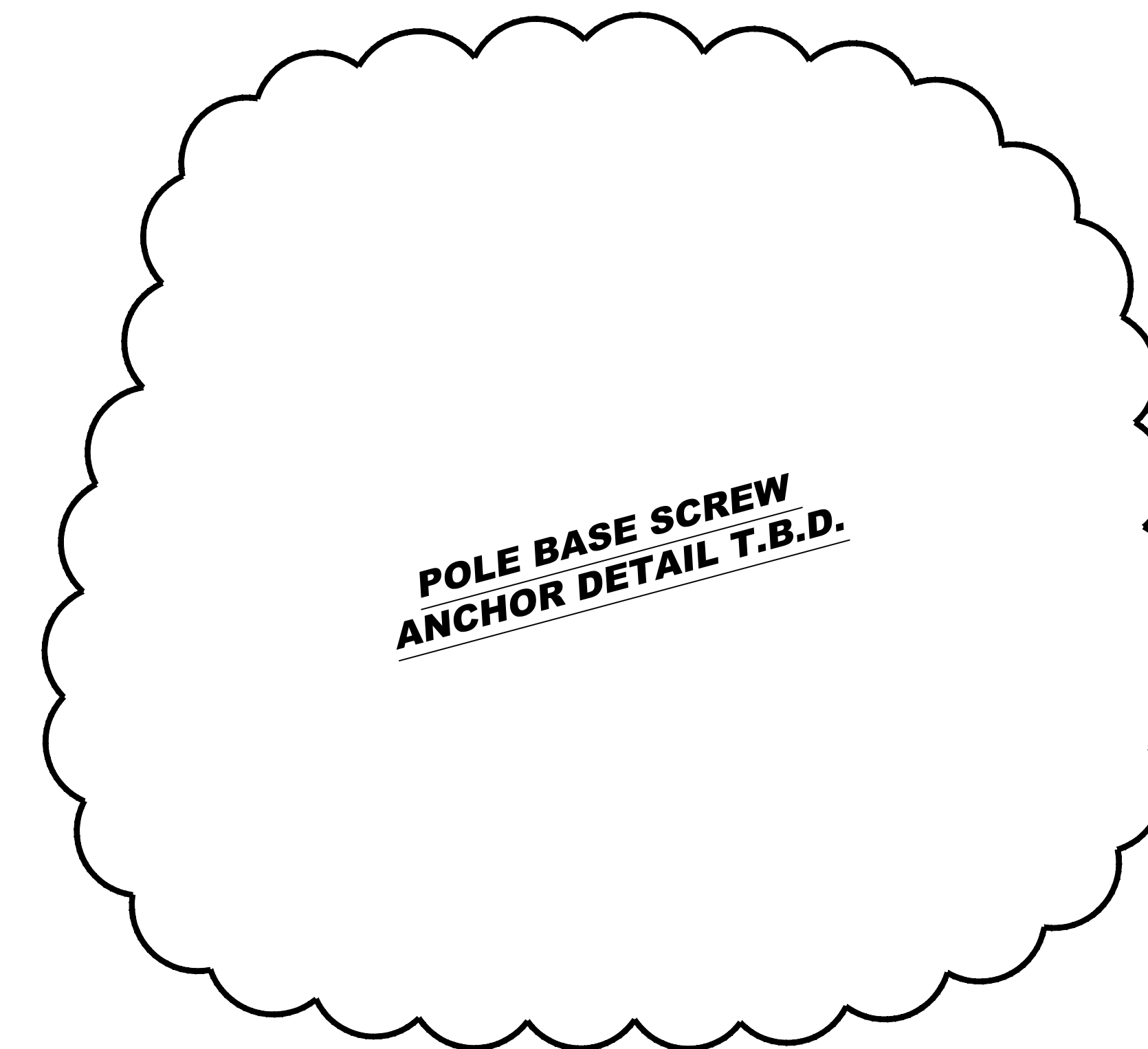
ELEVATION

- NOTES:
1. CONCRETE PAD LENGTH IS SIGN LENGTH +1200.
 2. INSTALL ANCHOR BOLTS AFTER CONCRETE HAS HARDENED.
 3. SUPPLY, INSTALL AND CONNECT NEW GROUND ROD.
 4. SIGN BASE MAY BE PRE-CAST WITH A PULLPIT ADJACENT TO THE BASE.

16 AIRFIELD GUIDANCE SIGN



15 FLOOD LIGHT POLE DETAIL



17 FLOOD LIGHT POLE BASE DETAIL

- GENERAL NOTES:**
1. DRAWINGS BASED ON AERIAL PHOTOS AND IS CONCEPTUAL ONLY.
 2. THIS DRAWING IS NOT TO BE USED FOR CONSTRUCTION PURPOSES UNTIL REVISION NOTED "ISSUED FOR CONSTRUCTION".
 3. ALL EXISTING SUB-SURFACE UTILITIES WITHIN CONSTRUCTION LIMITS TO BE LOCATED AND PROTECTED DURING CONSTRUCTION.
 4. INSTALLATION WILL COMPLY WITH:
 - CANADIAN ELECTRICAL CODE, C22.1 (LATEST EDITION)
 - TP312, 5TH EDITION

REVISION				
No.	Description	By	Appd.	Date
0	ISSUED FOR 90% REVIEW	KLL	RG	2020/09/

SEALS:

**PRELIMINARY
FOR INTERNAL
REVIEW ONLY**

CLIENT:

PROJECT:
AIRFIELD ELECTRICAL REHABILITATION

LOCATION:

TITLE:
ELECTRICAL DETAILS
SHEET 3 OF 3

PROJECT NO:	CEL6-001	SCALE:	NOT TO SCALE
DRAWING NO:	E4	REVISION:	0