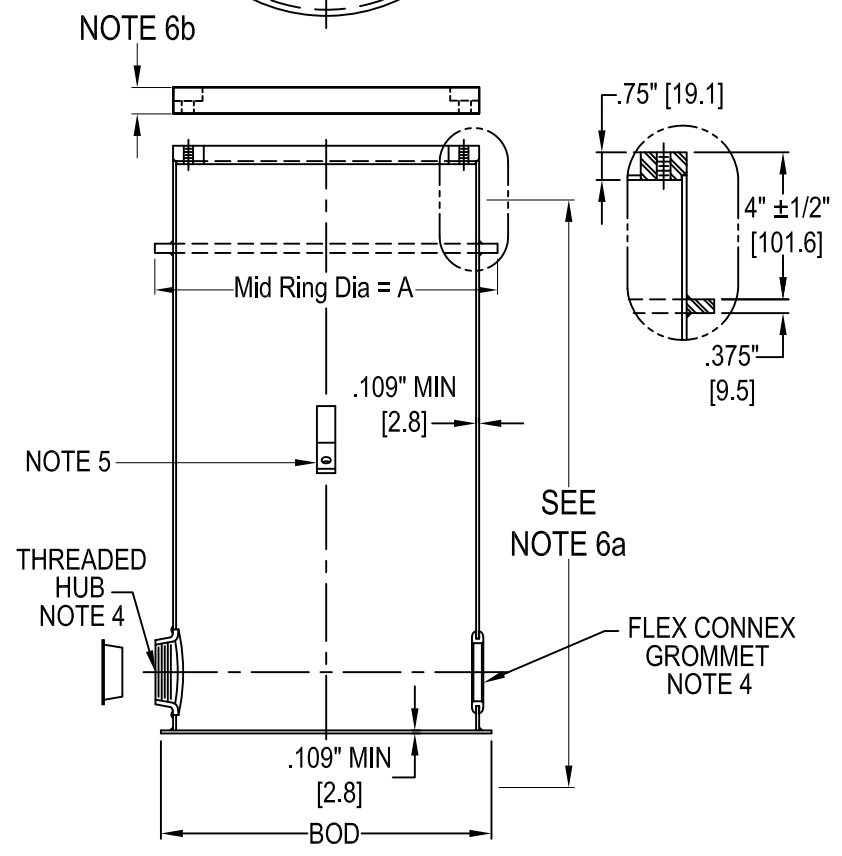
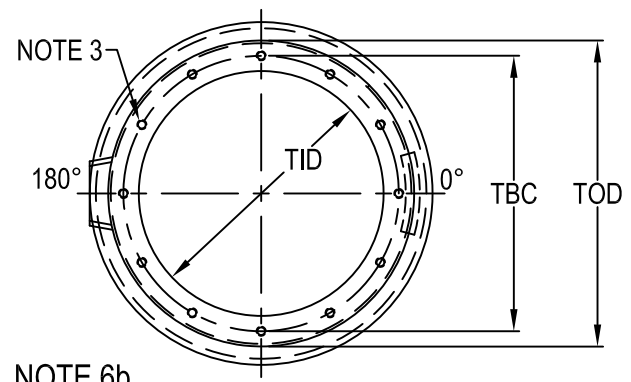


L-868 Class 1A Light Base



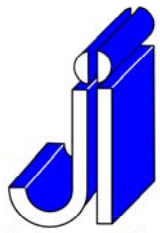
L-868 Class 1A Light Base

1. Approved and Certified to FAA Advisory Circular AC150/5345-42 (Current Revision) L868 class 1A
Size: A=8", B=12", C=15"
 2. Base galvanized to ASTM-A123/A123M-02
 3. Size A
(4) 3/8"-16 at 60°, 120°, 240° & 300°
Size B, C
(12) 3/8"-16 equally spaced, tapped holes are located over conduit openings
 4. Conduit Openings (minimum 2) are:
Located 180° apart 2.5" up from bottom
Various sizes and locations are available
Protective plug installed in threaded hubs
Flex Connex Grommets are shipped separately
 5. Internal / External Ground Straps are standard.
A copper ground lug (AWS0919) is optional, see page L-08h
 - 6a. Standard Height 24"
6b. L-868 Plywood Cover 3/4" or 5/8" with mud plate
- Other Heights/Thicknesses available
7. For Light Bases 10" or less, see p. D-06h



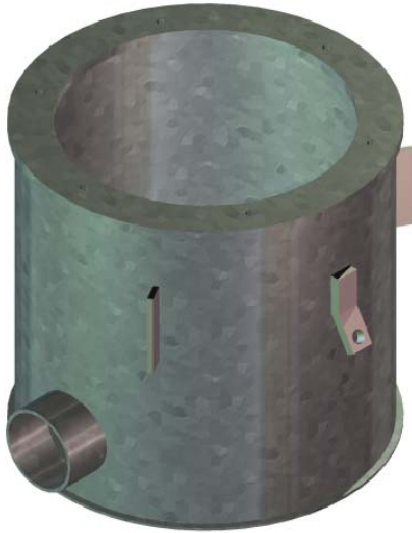
TYPE	BOD	TOD	TBC	TID	A
AC08 _____ 8" L868A	9.25" [234.9]	8.5" [215.9]	7.25" [184.2]	6.5" [165.1]	10" [254]
AC24 _____ 12" L868B	13.5" [342.9]	12.5" [317.5]	11.25" [285.8]	10" [254]	14" [355.6]
AC35 _____ 15" L868C	16" [406.4]	15.5" [393.7]	14.25" [362]	13" [330.2]	17" [431.8]

[] = dimensions in metrics; mm

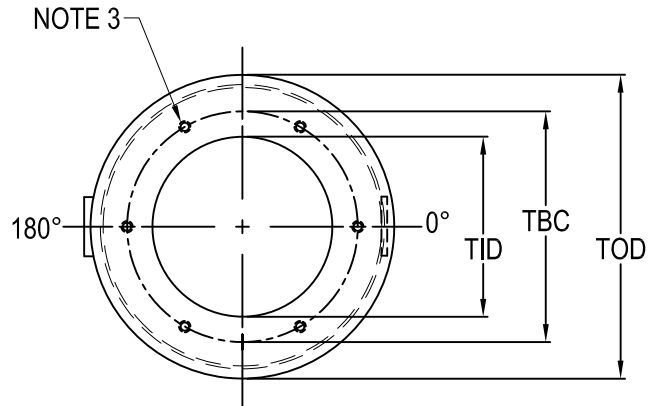


Bottom Section

for L-868 Class 1A multiple section light base



L-868 Class 1A Bottom Section
(Shown with Optional Fins)



1. Approved and Certified to FAA Advisory Circular AC150/5345-42 (Current Revision) L868 class 1A
Size: A=8", B=12", C=15"

2. Bottom Section galvanized to ASTM-A123/A123M-02

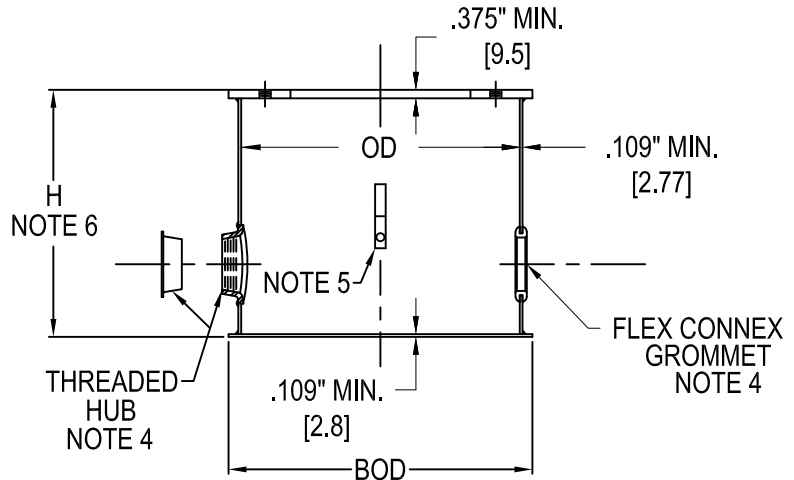
3. (6) 3/8"-16 equally spaced, tapped holes are located over conduit openings

4. Conduit Openings (minimum 2) are:
Located 180° apart and 2.5" up from bottom
Various sizes and locations are available
Protective plug installed in threaded hubs
Flex Connex Grommets are shipped separately

5. Internal / External Ground Straps are standard.
A copper ground lug (AWS0919) is optional, see page I-08h

6. H = height required
12" Standard height
4-1/2" Minimum

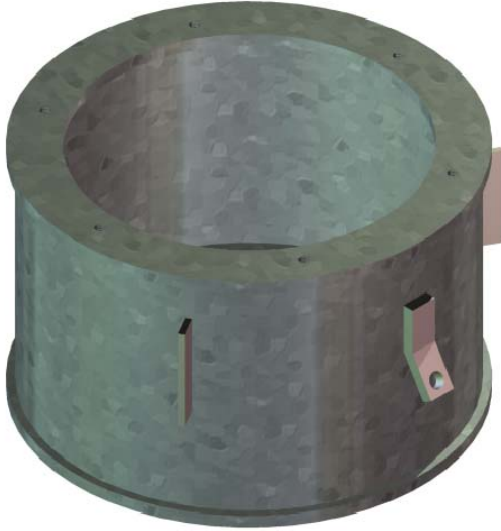
Other Heights/Thicknesses Available



TYPE	OD	TOD & BOD	TBC	TID
AC40 _____	8.5"	9"	6.25"	5.25"
8" L868A	[215.9]	[228.6]	[159.6]	[134.1]
AC44 _____	12.5"	13.5"	10.25"	9.25"
12" L868B	[317.5]	[342.9]	[260.4]	[235]
AC45 _____	15.5"	16"	13.25"	12.375"
15" L868C	[393.7]	[406.4]	[336.6]	[314.3]

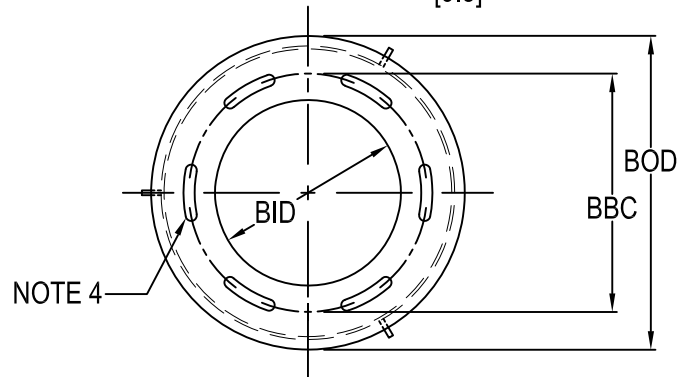
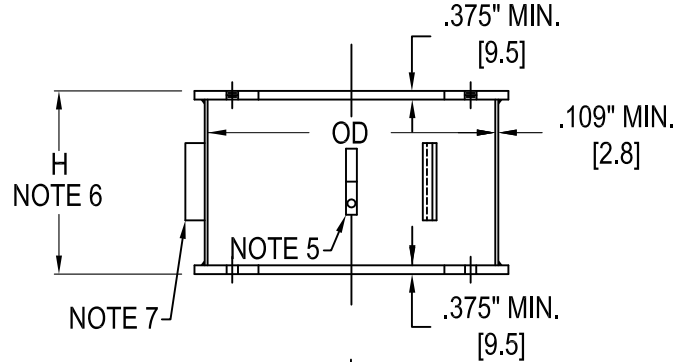
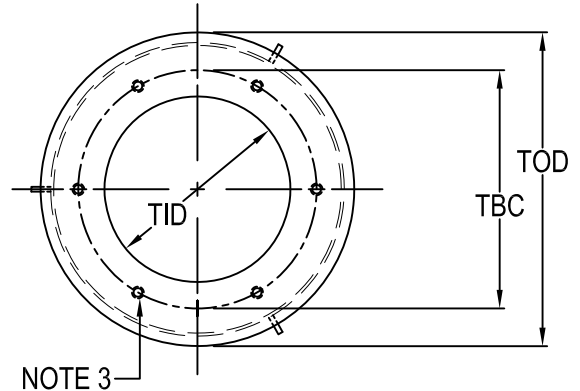
[] = dimensions in metrics; mm

Middle Section for L-868 Class 1A multiple section light base



L-868 Class 1A Middle Section

1. Approved and Certified to FAA Advisory Circular AC150/5345-42 (Current Revision) L868 class 1A Size: A=8", B=12", C=15"
2. Middle Section galvanized to ASTM-A123/A123M-02
3. (6) 3/8"-16 equally spaced, tapped holes are aligned and centered to bottom ring slots
4. (6) 7/16" \varnothing x 1.75" long slots equally spaced aligned with BBC
5. Internal / External Ground Straps are standard. A copper ground lug (AWS0919) is optional, see page I-08h
6. H = height required
8" Standard height
4" Minimum height
Other Heights Available- Specify at time of order
7. (3) 3/16" x 3/4" x 3" Antirotational Fins are located at intervals of 120°
8. Middle Sections are shipped with:
(6) 3/8"-16 x 1" Stainless hex head screws (10650198)
(6) 3/8", 2 piece locking washers (10680607)



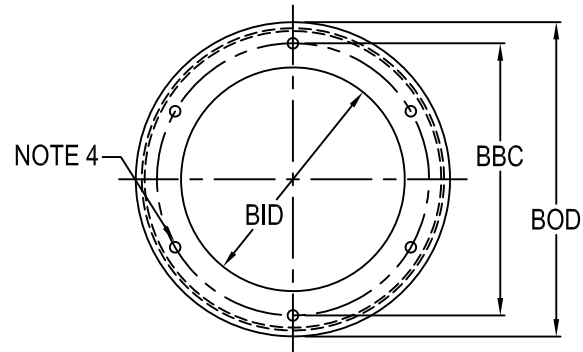
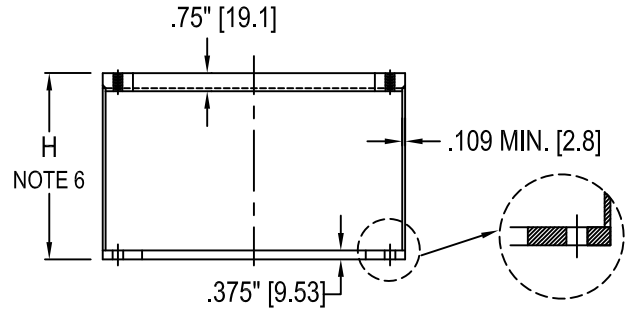
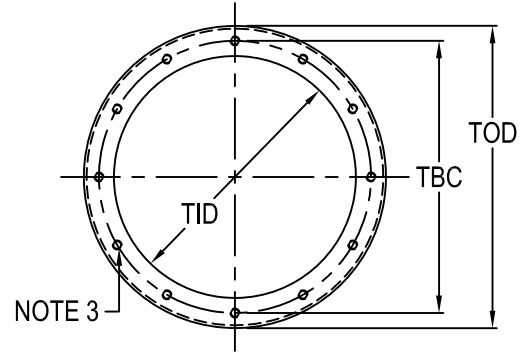
TYPE	OD	TOD & BOD	TBC & BBC	TID & BID
AE4703M 8" L868A	8.5" [215.9]	9" [228.6]	6.25" [159.6]	5.25" [134.1]
AE4704M 12" L868B	12.5" [317.5]	13.5" [342.9]	10.25" [260.4]	9.25" [235]
AE4705M 15" L868C	15.5" [393.7]	16" [406.4]	13.25" [336.6]	12.375" [314.3]

[] = dimensions in metrics; mm

Top Section L-868 Class 1A multiple section light base



L-868 Class 1A Top Section



- Approved and Certified to FAA Advisory Circular AC150/5345-42 (Current Revision) L868 class 1A
Size: A=8", B=12", C=15"
A=10" / AC150/5345-42C
- Top section galvanized to ASTM-A123/A123M-02
- (12) 3/8"-16 equally spaced, tapped holes are aligned with bottom holes
- (6) 7/16" Ø equally spaced, thru holes
- Customer I.D. marks optional
- H = height required, 2 1/4" minimum.
- Top Sections are shipped with:
(6) 3/8"-16 x 1" Stainless hex head screws (10650198)
(6) 3/8", 2 piece locking washers (10680607)
- Size A, 8" Top Section top holes are located @ 30°, 60°, 120°, 150°, 210°, 240°, 300° & 330°.

TYPE	PART NO.	TOD & BOD	TBC	BBC	TID	BID
AE0829F 8" L868A	AF0 ----	8.5" [215.9]	7.25" [184.2]	6.25" [159.6]	6.5" [165.1]	5.25" [134.1]
AE1529F 10" L868 See Note 1	AF1 ----	10.5" [266.7]	9.25" [235]	8.25" [209.6]	8" [203.2]	6" [152.4]
AE2419F 12" L868B	AF2 ----	12.5" [317.5]	11.25" [285.8]	10.25" [260.4]	10" [254]	9.25" [235]
AE3519F 15" L868C	AF3 ----	15.5" [393.7]	14.25" [362]	13.25" [336.6]	13" [330.2]	12.375" [314.3]

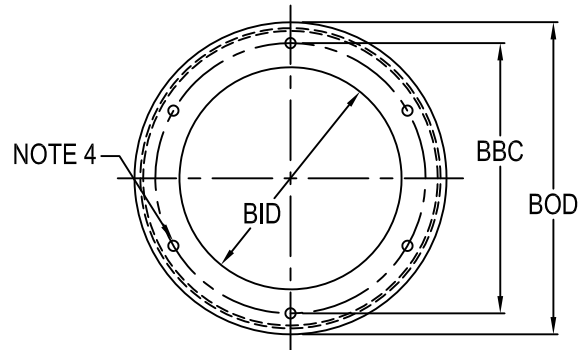
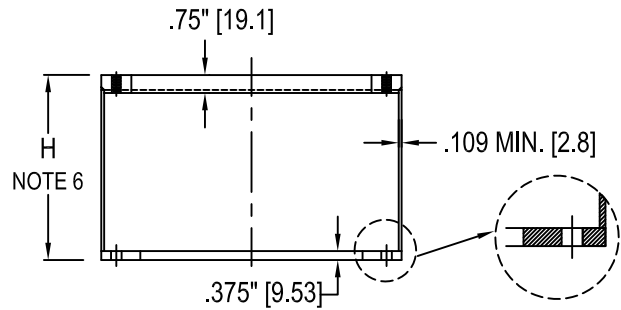
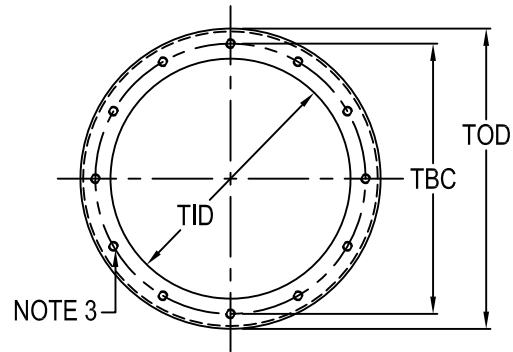
[] = dimensions in metrics; mm.

Extension L-868 Class 1A multiple section light base



L-868 Class 1A Extension

1. Approved and Certified to FAA Advisory Circular AC150/5345-42 (Current Revision) L868 class 1A
Size: A=8", B=12", C=15"
A=10" AC150/5345-42 (Rev C)
2. Extension galvanized to ASTM-A123/A123M-02
3. (12) 3/8"-16 equally spaced, tapped holes are aligned with bottom holes
4. (6) 7/16" Ø equally spaced, thru holes
5. Customer I.D. marks optional
6. H = height required, 2 1/4" minimum.
7. Extensions are shipped with:
 - (6) 3/8"-16 x 1" Stainless hex head screws (10650198)
 - (6) 3/8", 2 piece locking washers (10680607)
- 8a. 8" Extension top holes are located at 30°, 60°, 120°, 150°, 210°, 240°, 300° & 330°.



TYPE	PART NO.	TOD & BOD	TBC	BBC	TID	BID
AE0829X 8" L868A	AX0 _ _ _ _	8.5"	7.25"	7.25"	6.5"	6.5"
		[215.9]	[184.2]	[184.2]	[165.1]	[165.1]
AE1529X 10" L868 See Note 1	AX1 _ _ _ _	10.5"	9.25"	9.25"	8"	6"
		[266.7]	[235]	[235]	[203.2]	[152.4]
AE2419X 12" L868B	AX2 _ _ _ _	12.5"	11.25"	11.25"	10"	10"
		[317.5]	[285.8]	[285.8]	[254]	[254]
AE3519X 15" L868C	AX3 _ _ _ _	15.5"	14.25"	14.25"	13"	12.375"
		[393.7]	[362]	[362]	[330.2]	[314.3]

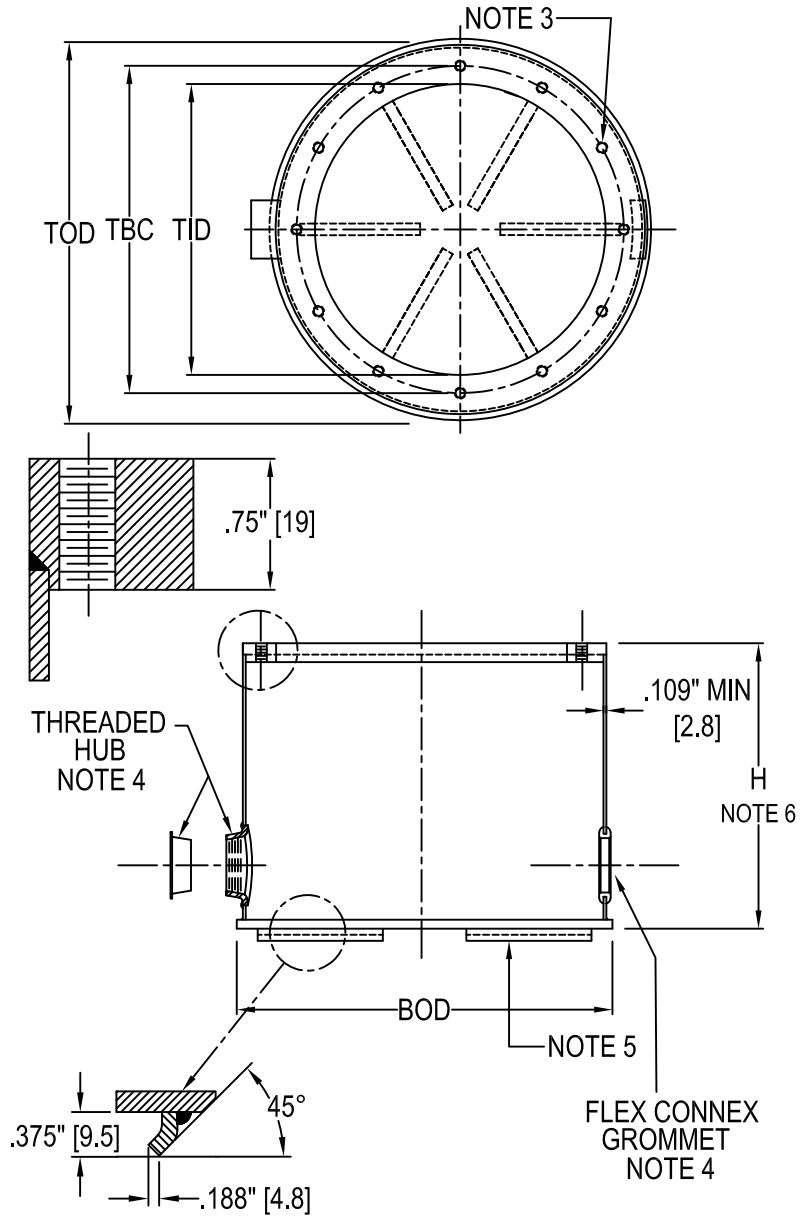
[] = dimensions in metrics; mm.

L-868 Class 1A Inset Light base



L-868 Class 1A Inset Light Base

- Approved and Certified to FAA Advisory Circular AC150/5345-42 (Current Revision) L868 class 1A Size: A=8", B=12", C=15"
 - Base galvanized to ASTM-A123/A123M-02
 - Size A
(4) 3/8"-16 at 30°, 150°, 210° & 330°
Size B, C
(12) 3/8"-16 equally spaced, tapped openings are located over conduit openings
 - Conduit Openings (minimum 2) are:
Located 180° apart and 2.5" up from bottom
Various sizes and locations are available
Protective plug installed in threaded hubs
Flex Connex Grommets are shipped separately
 - Anti-Rotation hooks are standard
 - Internal/External ground straps optional
 - H = height required
10" Maximum height
Note: These bases have no mid-ring
- Other Heights Available
- See p. D-01h for bases taller than 10" high with mid-ring.



TYPE	TID	TBC	TOD	BOD
AC08 _____ 5	6.5"	7.25"	8.5"	9"
8" L868A	[165.1]	[184.2]	[215.9]	[228.6]
AC24 _____ 5	10"	11.25"	12.5"	13"
12" L868B	[254]	[285.8]	[317.5]	[330.2]
AC35 _____ 5	13"	14.25"	15.5"	16"
15" L868C	[330.2]	[362]	[393.7]	[406.4]

[] = dimensions in metrics; mm

Top Section for L-868 Class 1A

DFW Special for use with Multi-Hole Adapter



L-868 Class 1A DFW Top Section

1. Approved and Certified to FAA Advisory Circular AC150/5345-42 (Current Revision) L868B class 1A Modified for Dallas Ft. Worth Standards Size: B=12"

2. Top section galvanized to ASTM-A123/A123M-02

3. (24) 7/16"Ø equally spaced, thru holes

4. (12) 7/16"Ø equally spaced, thru holes on 2 bolt circles

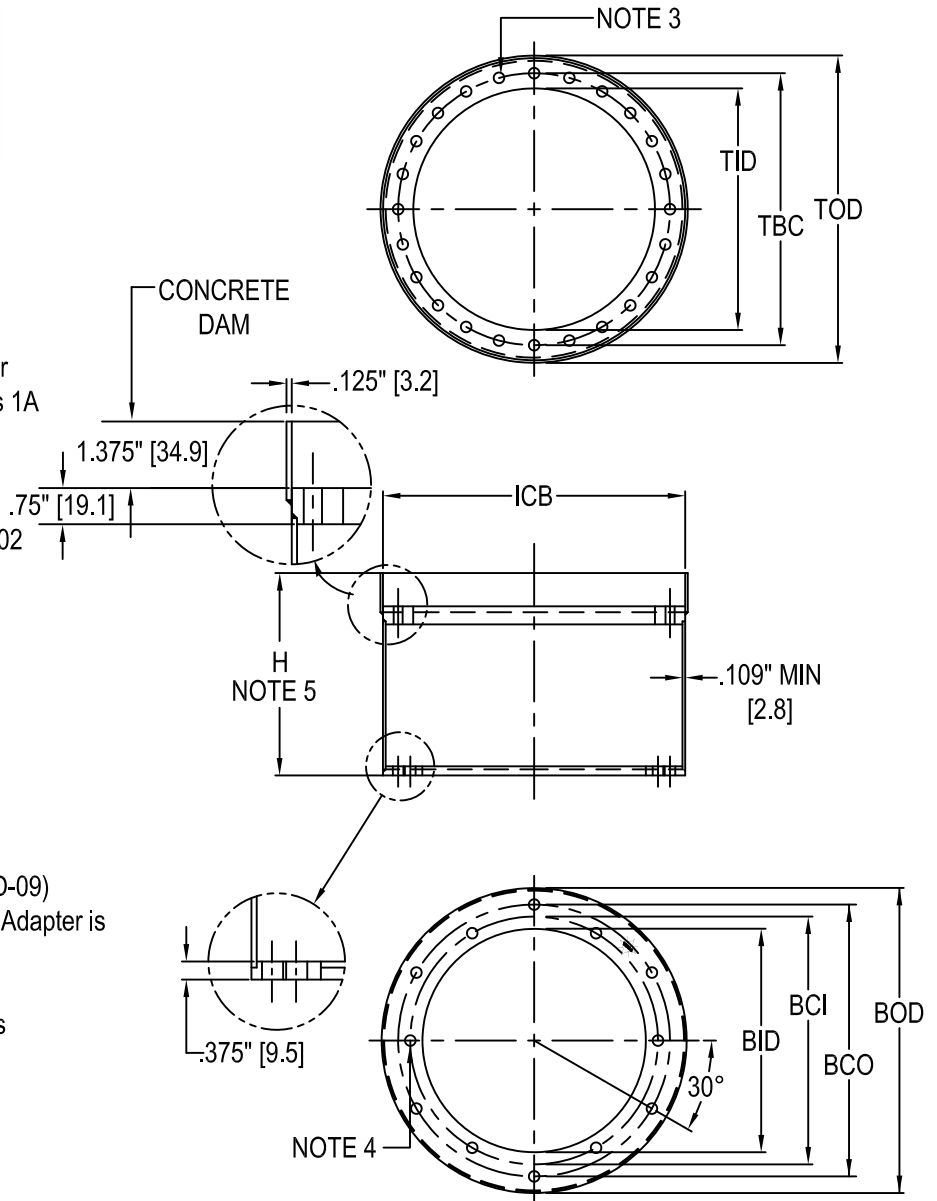
5. H = height required, 3 3/8" minimum

6. DFW Top Sections are shipped with:
Multi-hole Adapter #AA5423DFW (See Dwg # D-09) when Multi-hole Adapter is ordered separately. Adapter is Bolted and Torqued to 180 inch pounds.
Bolt Packup #6100 which contains:
(6) 3/8"-16 x 1" Stainless hex head cap screws (10650198)
(6) 3/8", 2 piece locking washers (10680607)

7. Pavement Dam must be installed 1/8" below finished grade.

8. Field measurement must have 1/8" deducted to position Pavement Dam 1/8" below pavement grade per FAA AC 150/5340-30

or
See p. K-04h for proper measurement technique

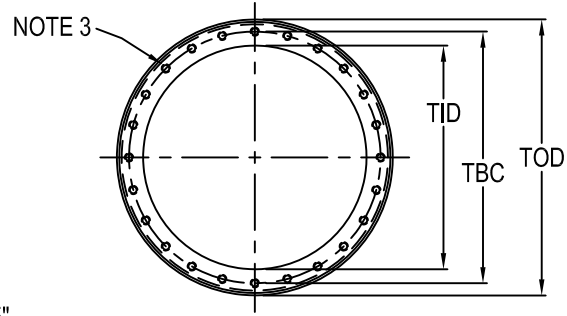


TYPE	TOD	TID	TBC & BCO	BID	BCI	BOD	ICB
AE2419DFW	12.75"	10"	11.25"	9.25"	10.25"	12.5"	12.125"
12" L868B	[323.9]	[254]	[285.8]	[235]	[260.4]	[317.5]	[308]

[] = dimensions in metrics; mm.

L-868 Class 1A Top Section HAS & MEM

Special for use with Multi-Hole Adapter



L-868 Class 1A HAS & MEM Top Section

1. Approved and Certified to FAA Advisory Circular AC150/5345-42 (Current Revision) L868 class 1A Size: B=12" C=15" Modified for Houston & Memphis Standards

2. Top section galvanized to ASTM-A123/A123M-02

3. HAS = (24) 15/32"Ø equally spaced, thru holes
MEM = (24) 3/8"-16 equally spaced, tapped holes

4. (6) 7/16" Ø thru holes

5. H = height required, 3 3/8" minimum

6. HAS & MEM Top Sections are shipped with:
Multi-hole Adapter #AA5_23MEM/HAS (See Dwg # D-09) when Multi-hole Adapter are ordered separately. Adapter is Bolted and Torqued to 180 inch pounds.

Bolt Packup #6100 (for AE__19MEM) which contains:

- (6) 3/8"-16 x 1" SS hex head bolts (10650198)
- (6) 3/8", 2 piece locking washers (10680607)
- (6) 3/8"-16 SS Hex Nut (10680719)

Bolt Packup #6104 (for AE__19HAS) which contains:

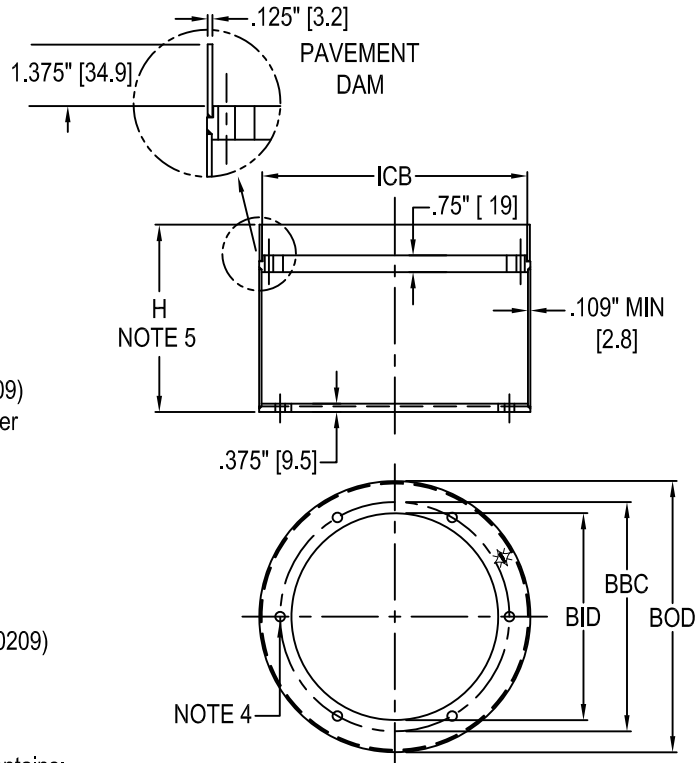
- (6) 3/8"-16 x 2" Stainless hex head cap screws (10650209)
- (6) 3/8", 2 piece locking washers (10680607)
- (6) 3/8"-16 SS Hex Nut (10680719)

Lockwasher Packup #6099 (for AE__19HAS) which contains:

- (6) 3/8", 2 piece locking washers (10680607)

7. Pavement Dam must be installed 1/8" below finished grade.

Field measurement must have 1/8" deducted to position Pavement
FAA AC 150/5340-30 or See p. K-05f for proper measurement technique



TYPE	TOD	TID	TBC	BID	BBC	BOD	ICB
AE2419HAS	12.5"	10"	11.25"	9.25"	10.25"	12.5"	12.125"
AE2419MEM 12" L868B	[317.5]	[254]	[285.8]	[235]	[260.4]	[317.5]	[308]
AE3519HAS	15.37"	13"	14.25"	12.38"	13.25"	15.125"	15.125"
AE3519MEM 15" L868C	[390.4]	[330.2]	[362]	[314.4]	[336.6]	[384.2]	[384.2]

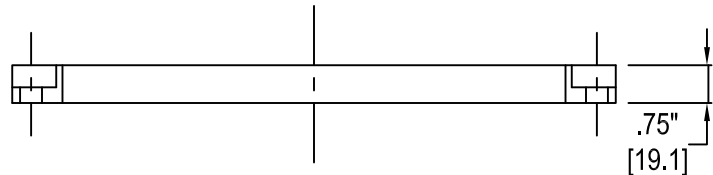
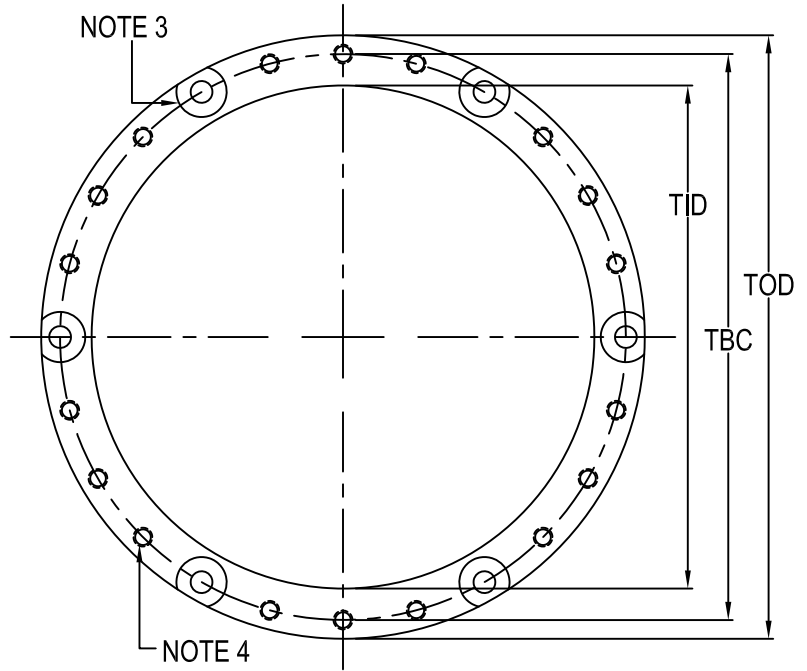
[] = dimensions in metrics; mm.

Multi-Hole Adapter L-868 Class 1A HAS, MEM, & DFW



L-868 Class 1A Multi-Hole Adapter

1. Approved and Certified to FAA Advisory Circular AC150/5345-42 (Current Revision) L868 class 1A
Size: B=12" C=15"
 2. Multi-hole adapters are galvanized to ASTM-A123/A123M-02
 3. (6) 7/16" Ø equally spaced, thru holes with 1" Ø x 7/16" deep counter bore
 4. (18) 3/8"-16 tapped holes
 5. MEM Multi-hole Adapters are shipped with:
 - (2) Bolt packups #6101 which contains:
 - (6) 3/8"-16 x 1 1/4" Stainless hex head cap screws (10650202)
 - (6) 3/8", 2 piece locking washers (10680607)
- HAS/DFW Multi-hole Adapters are shipped with:
- (6) 3/8"-16 x 2" Stainless hex head cap screws (10650209)
 - (6) 3/8"-16 SS hex nuts (10680719)
 - (6) 3/8", 2 piece locking washers (10680607)
- Bolt pickup #6101 which contains:
- (6) 3/8"-16 x 1 1/4" Stainless hex head cap screws (10650202)
 - (6) 3/8", 2 piece locking washers (10680607)



TYPE	TOD	TID	TBC
AA5423MEM AA5423HAS 12" L868B	12" [304.8]	10" [254]	11.25" [285.8]
AA5423DFW 12" L868B	12.25" [317.5]	10" [254]	11.25" [285.8]
AA5523MEM AA5523HAS 15" L868C	15" [381]	13" [330.2]	14.25" [362]

[] = dimensions in metrics; mm.

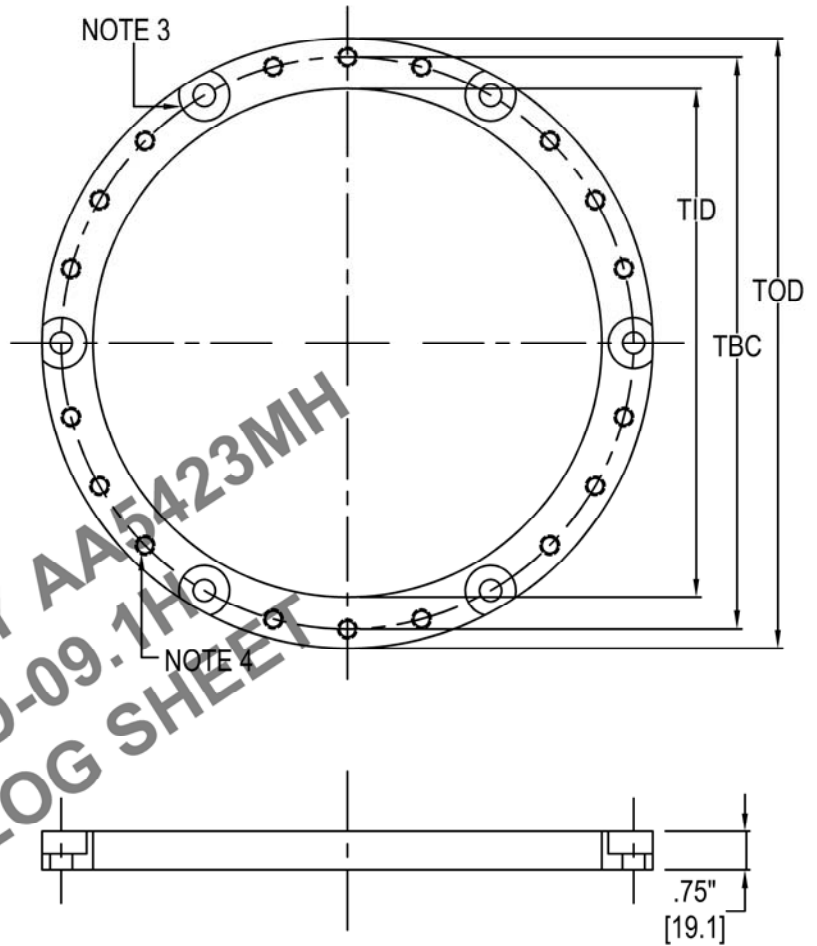
Multi-Hole Adapter L-868 Class 1A HAS, MEM, & DFW



L-868 Class 1A Multi-Hole Adapter

1. Approved and Certified to FAA Advisory Circular AC150/5345-42 (Current Revision) L868 class 1A Size: B=12" C=15"
2. Multi-hole adapters are galvanized to ASTM-A123/A123M-02
3. (6) 7/16" Ø equally spaced, thru holes with 1" Ø x 7/16" deep counter bore
4. (18) 3/8"-16 tapped holes
5. MEM Multi-hole Adapters are shipped with:
 - (2) Bolt packups #6101 which contains:
 - (6) 3/8"-16 x 1 1/4" Stainless hex head cap screws (10650202)
 - (6) 3/8", 2 piece locking washers (10680607)

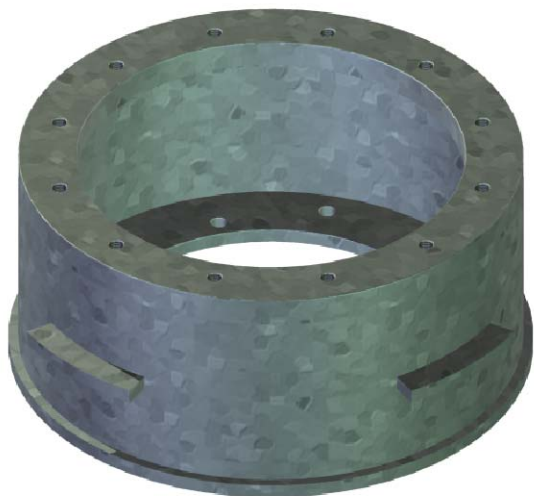
- HAS/DFW Multi-hole Adapters are shipped with:
- (6) 3/8"-16 x 2" Stainless hex head cap screws (10650209)
 - (6) 3/8"-16 SS hex nuts (10680719)
 - (6) 3/8", 2 piece locking washers (10680607)
- Bolt packup #6101 which contains:
- (6) 3/8"-16 x 1 1/4" Stainless hex head cap screws (10650202)
 - (6) 3/8", 2 piece locking washers (10680607)



TYPE	TOD	TID	TBC
AA5423MEM	12"	10"	11.25"
AA5423HAS 12" L868B	[304.8]	[254]	[285.8]
AA5423DFW	12.25"	10"	11.25"
12" L868B	[317.5]	[254]	[285.8]
AA5523MEM	15"	13"	14.25"
AA5523HAS 15" L868C	[381]	[330.2]	[362]

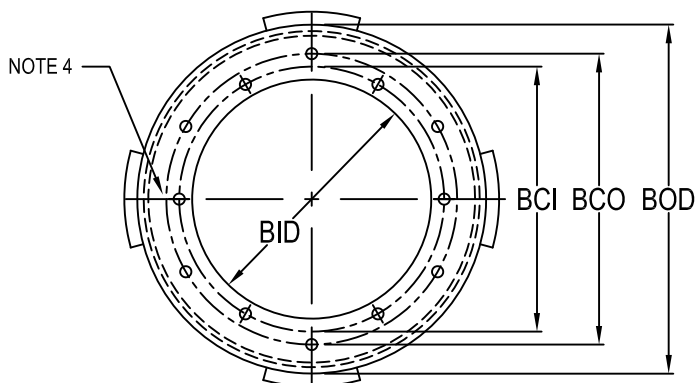
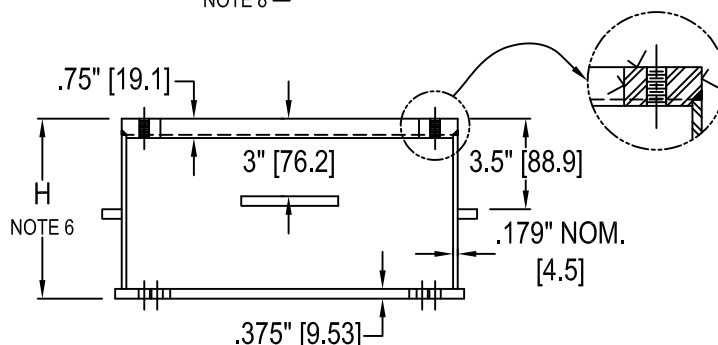
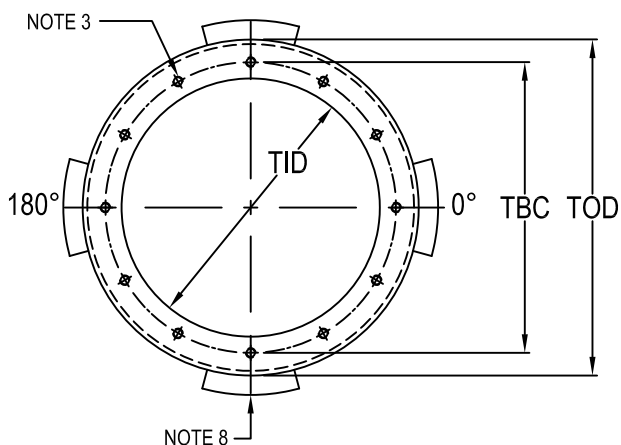
[] = dimensions in metrics; mm.

.179" Wall Extension L-868 Class 1A



L-868 Class 1A .179" Wall Extension

1. Approved and Certified to FAA Advisory Circular AC150/5345-42 (Current Revision) L868 class 1A Modified for Chicago ORD
Size: B=12"
2. Material: A36 HRS
Extension galvanized to ASTM-A123/A123M-02
3. (12) 3/8"-16 equally spaced, tapped holes are aligned with bottom holes
4. (12) 7/16" Ø equally spaced, thru holes on 2 bolt circles
5. Customer I.D. marks optional
6. H = height required, 2 1/4" minimum
7. Extensions are shipped with:
 - (6) 3/8"-16 x 1" Stainless hex head cap screws (10650198)
 - (6) 3/8", 2 piece locking washers (10680607)
8. (4) Anchor Bars (only on XC Extension 5" or higher)



TYPE	TOD	BOD	TBC & BCO	BCI	TID	BID
AE2419XC	13"	13.5"	11.25"	10.25"	10"	9.25"
12" L868B	[330.2]	[342.9]	[285.8]	[260.4]	[254]	[235]

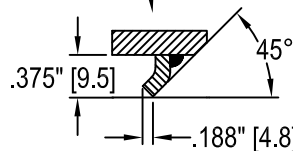
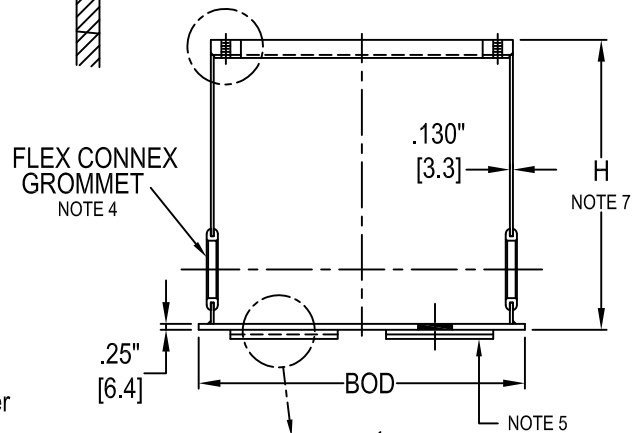
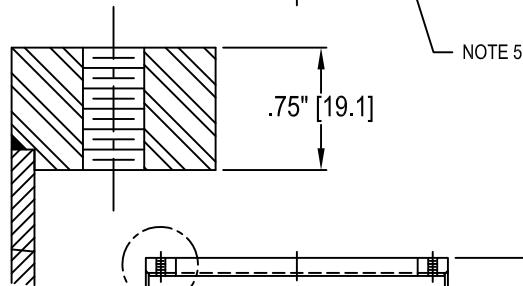
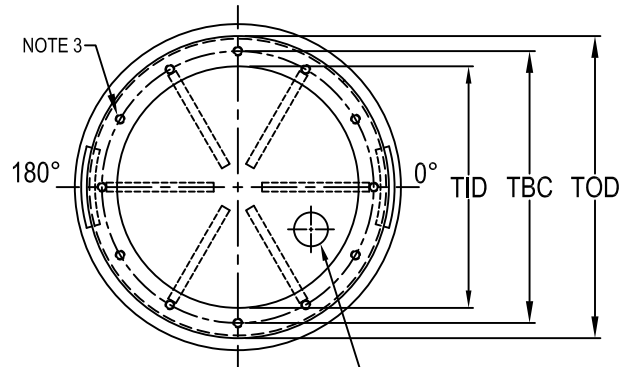
[] = dimensions in metrics; mm.

Single Base

L-868 Class 1A Port Authority - N.Y. & N.J.



L-868 Single Base, Epoxy Hooks visible



1. Approved and Certified to FAA Advisory Circular AC150/5345-42H (Current Revision) with modifications for Port Authority - N.Y. & N.J. Standards
Size: B=12", C=15"
2. Material: A36 HRS
Base galvanized to ASTM-A123/A123M-02
3. (12) 3/8"-16 equally spaced, tapped openings are located over conduit openings
4. Conduit Openings (minimum 2) are:
Located 180° apart and 2.5" up from bottom
Various sizes and locations are available
Flex Connex Grommets are shipped separately
5. 1/4" Thick Bottom with Anti-Rotation Hooks
1.406 Ø Drain Hole for 3/4" flex, 3 1/2" from the center
6. Internal/External ground straps included
7. Reference Old Part # A2420Y
8. H = height required, 12" Standard height
Other heights available and to designate variations to the base, see ordering worksheet.

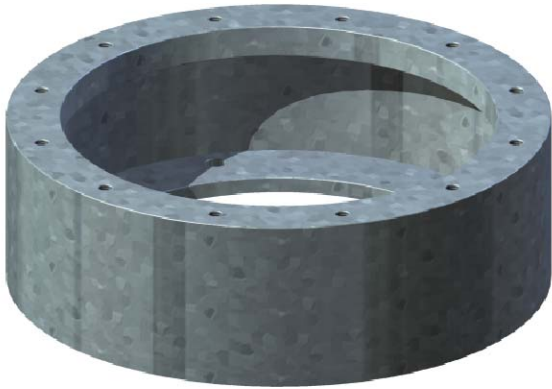
TYPE	BOD	TOD	TBC	TID
AC24 _____ 5Q_P 12" L868B	13.5" [342.9]	12.5" [317.5]	11.25" [285.8]	10" [254]
AC35 _____ 5Q_P 15" L868C	16" [406.4]	15.5" [393.7]	14.25" [362]	13" [330.2]

[] = dimensions in metrics; mm

.130" Wall Extension

L-868 Class 1A

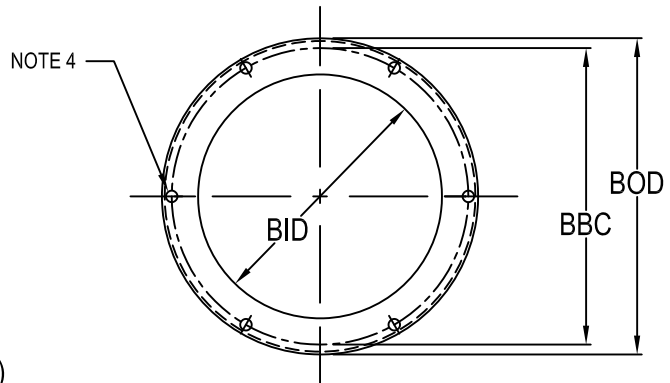
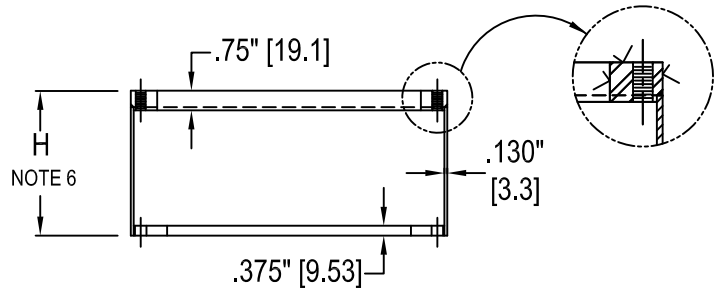
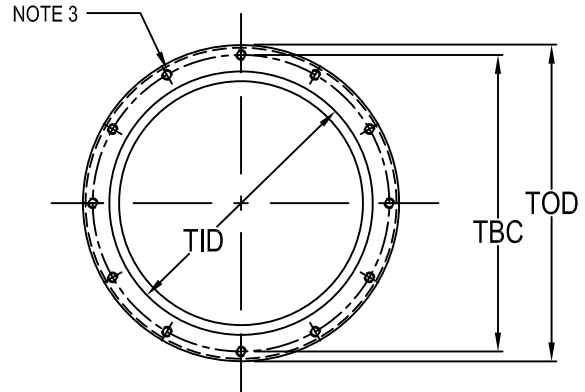
Port Authority - N.Y. & N.J.



L-868 Class 1A .130" Wall Extension

1. Approved and Certified to FAA Advisory Circular AC150/5345-42 (Current Revision) L868 class 1A with modifications for Port Authority - N.Y. & N.J. Standards Size: B=12", C=15"
2. Material: A36 HRS
Extension galvanized to ASTM-A123/A123M-02
3. (12) 3/8"-16 equally spaced, tapped holes are aligned with bottom holes
4. (6) 7/16" Ø equally spaced, thru holes
5. Customer I.D. marks available
6. 2 1/4" minimum, H = height required
7. Extensions 2 1/4" or shorter are shipped with:
 - (6) 3/8"-16 x 1" Stainless hex head cap screws (10650198)
 - (6) 3/8", 2 piece locking washers (10680607)

- Extensions 2 5/16" or taller are shipped with:
- (6) 3/8"-16 x 1 3/4" Stainless hex head cap screws (10650207)
 - (6) 3/8", 2 piece locking washers (10680607)



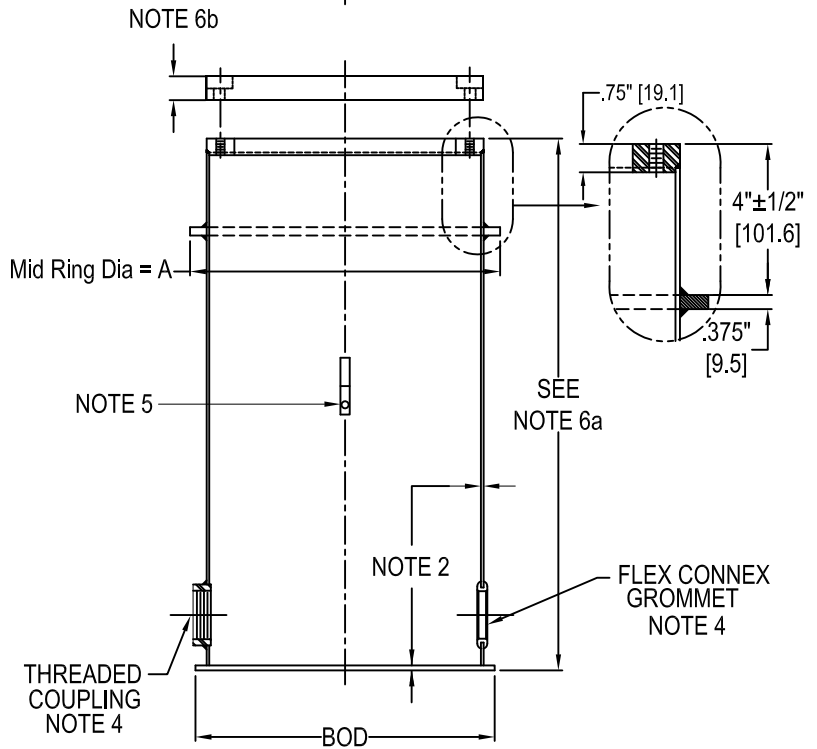
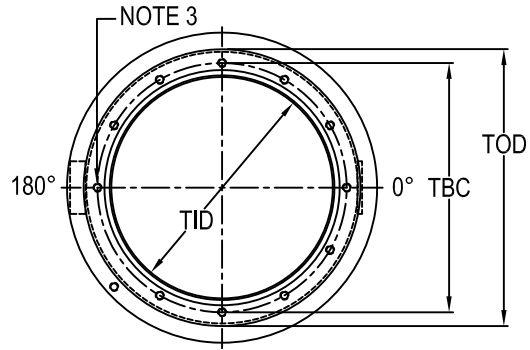
TYPE	TOD & BOD	TBC & BBC	TID	BID
AE2419XPA	12.5"	11.25"	10"	9.25"
12" L868B	[317.5]	[285.8]	[254]	[235]
AE3519XPA	15.5"	14.25"	13"	12.375"
15" L868C	[393.7]	[362]	[330.2]	[314.3]

[] = dimensions in metrics; mm.

L-868 Class 1B Light Base



L-868 Class 1B Light Base



1. Approved and Certified to FAA Advisory Circular AC150/5345-42 (Current Revision) L868 class 1B
Size: A=8", B=12", C=15"
- * 2. Material to meet 1B requirement
ACS - 12 GA. Min. Thickness 304/18-8 Stainless Steel
ACB - .109" Min. Thickness Class 1A with VEGA™-KOTE proprietary coating
3. ACS - (12) 3/8"-16 equally spaced, tapped holes
GARDSERT™ optional.
ACB - (12) 3/8"-16 equally spaced, Stainless Steel top ring standard, GARDSERT™ optional.
4. Conduit Openings are:
Located 180° apart 2.5" up from bottom
Various sizes and locations are available
Protective plug installed in threaded couplings
Flex Connex Grommets are shipped separately
5. Internal / External Stainless Steel Ground Straps are standard.
ACB option equipped with uncoated ground straps
Copper Lug AWS0919 is optional.

6a. Standard height = 24" [609.6]
6b. L-868 Plywood Cover 3/4" or 5/8" with mud plate

Other Heights available

TYPE	PART NO.	TOD	TBC	TID	BOD	A
* L868A 8"	ACS08_____	8.5"	7.25"	6.5"	9.5"	10"
	ACB08_____VK	[215.9]	[184.2]	[165.1]	[241.3]	[254]
* L868B 12"	ACS24_____	12.5"	11.25"	10"	13.5"	14"
	ACB24_____VK	[317.5]	[285.8]	[254]	[342.9]	[355.6]
* L868C 15"	ACS35_____	15.5"	14.25"	13"	16.5"	17"
	ACB35_____VK	[393.7]	[362]	[330.2]	[419.1]	[431.8]

[] = dimensions in metrics; mm

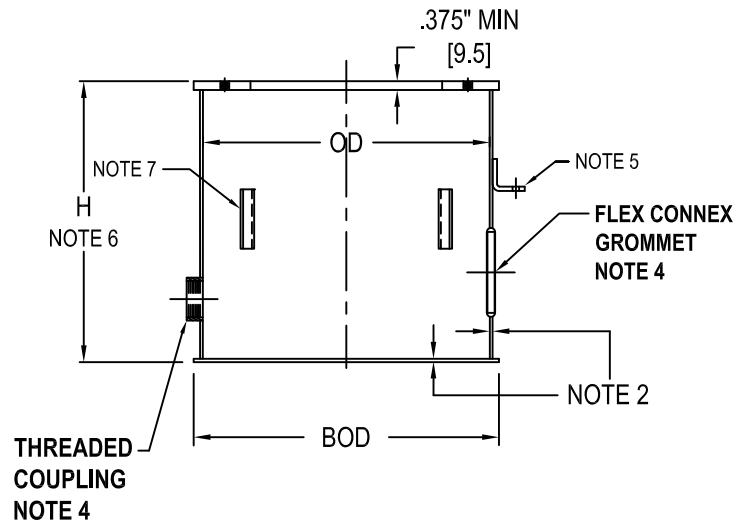
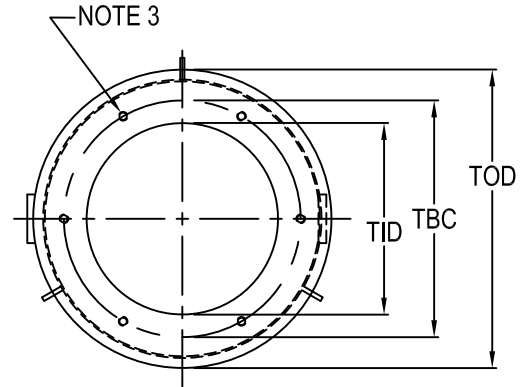
* SEE NOTE 2

Bottom Section for L-868 Class 1B multiple section light base



L-868 Class 1B Bottom Section
(Shown with optional Fins)

- Approved and Certified to FAA Advisory Circular AC150/5345-42 (Current Revision) L868 class 1B
Size: B=12", C=15"
- Material to meet 1B requirement
 - * ACS - 12 GA. Min. Thickness 304/18-8 Stainless Steel
 - ACB - .109" Min. Thickness Class 1A with VEGA™-KOTE proprietary coating
- ACS - (6) 3/8"-16 equally spaced, tapped holes
GARDSERT™ optional
ACB - (6) 3/8"-16 equally spaced, Stainless
Steel top ring standard, GARDSERT™ optional
- Conduit Openings are:
ACS bases available without conduit openings (field drilled)
Located 180° apart and 2.5" up from bottom
Various sizes and locations are available
Protective plug installed in threaded couplings
Flex Connex Grommets are shipped separately
- Internal/External Stainless Steel Ground Straps are standard.
ACB option equipped with uncoated ground straps
Copper Lug ASW0919 is optional



- H = height required
12" Standard height
4-1/2" Minimum
- (3) 7 GA. (MIN) x 3/4" Antirotational Fins
Located at intervals of 120° as shown are optional
(4) Fins at 90° available

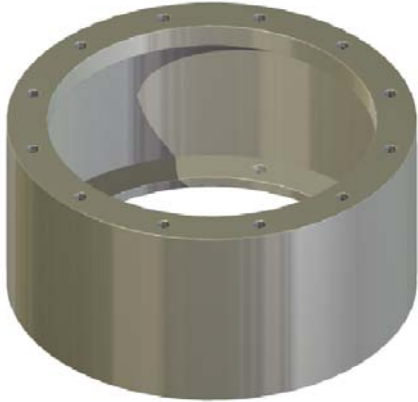
TYPE	PART NO.	OD	TOD & BOD	TBC	TID
* L868B	ACS44 _____	12.5"	13.5"	10.25"	9.25"
12"	ACB44 _____ VK	[317.5]	[342.9]	[260.4]	[235]
* L868C	ACS45 _____	15.5"	16.5"	13.25"	12.375"
15"	ACB45 _____ VK	[393.7]	[419.1]	[336.6]	[314.3]

[] = dimensions in metrics; mm.

* SEE NOTE 2

Other Heights Available

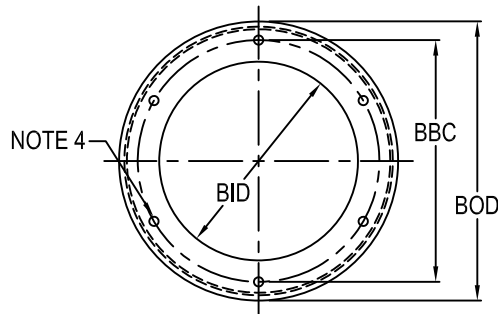
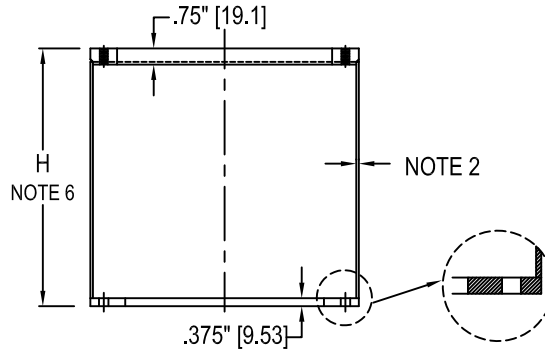
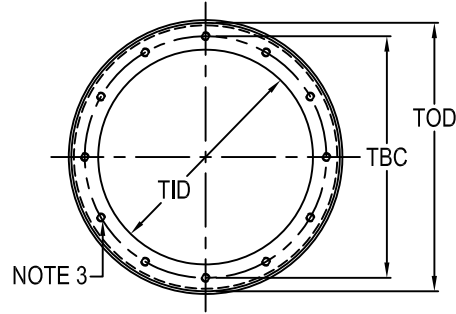
Top Section L-868 Class 1B multiple section light base



L-868 Class 1B Top Section

- Approved and Certified to FAA Advisory Circular AC150/5345-42 (Current Revision) L868 class 1B
Size: A=8", B=12", C=15"
A=10" / AC150/5345-42

- * 2. Material to meet 1B requirement
AES - 12 GA. Min. Thickness 304/18-8 Stainless Steel
AEB - .109" Min. Thickness Class 1A with VEGA™-KOTE proprietary coating
- 3. AES - (12) 3/8"-16 equally spaced, tapped holes
GARDSERT™ optional
AEB - (12) 3/8"-16 equally spaced, Stainless Steel top ring standard, GARDSERT™ optional
- 4. (12) 5/16" Ø equally spaced, thru holes on top ring
(6) 7/16" Ø equally spaced, thru holes on bottom ring
- 5. Customer I.D. marks optional
- 6. H = height required, 2 1/4" minimum
- 7. Top Sections are shipped with:
(6) 3/8"-16 x 1" Stainless hex head cap screws (10650198)
(6) 3/8", 2 piece locking washers (10680607)
- 8. See p. K-04h for available options



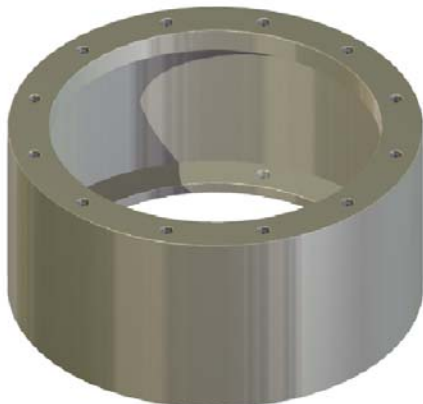
	TYPE	PART NO.	TOD & BOD	TBC	BBC	TID	BID
*	AE_0829F 8" L868A	AFS0_ _ _ _	8.5"	7.25"	6.25"	6.5"	5.25"
		AFB0_ _ _ _ VK	[215.9]	[184.2]	[159.6]	[165.1]	[134.1]
*	AE_1529F 10" L868 See Note 1	AFS1_ _ _ _	10.5"	9.25"	8.25"	8"	6"
		AFB1_ _ _ _ VK	[266.7]	[235]	[209.6]	[203.2]	[152.4]
*	AE_2419F 12" L868B	AFS2_ _ _ _	12.5"	11.25"	10.25"	10"	9.25"
		AFB2_ _ _ _ VK	[317.5]	[285.8]	[260.4]	[254]	[235]
*	AE_3519F 15" L868C	AFS3_ _ _ _	15.5"	14.25"	13.25"	13"	12.375"
		AFB3_ _ _ _ VK	[393.7]	[362]	[336.6]	[330.2]	[314.3]

[] = dimensions in metrics; mm.

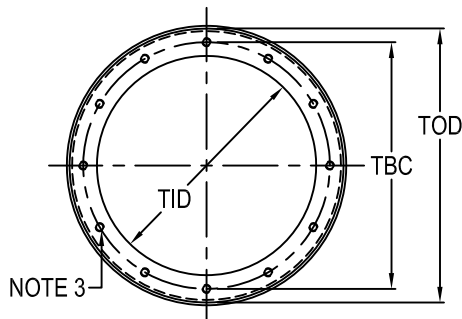
* SEE NOTE 2

Extension L-868 Class 1B

multiple section light base



L-868 Class 1B Extension



- Approved and Certified to FAA Advisory Circular AC150/5345-42 (Current Revision) L868 class 1B
Size: A=8", B=12", C=15"
A=10" / AC150/5345-42

- * 2. Material to meet 1B requirement
AES - 12 GA. Min. Thickness 304/18-8 Stainless Steel
AEB - .109" Min. Thickness Class 1A with VEGA™-KOTE proprietary coating

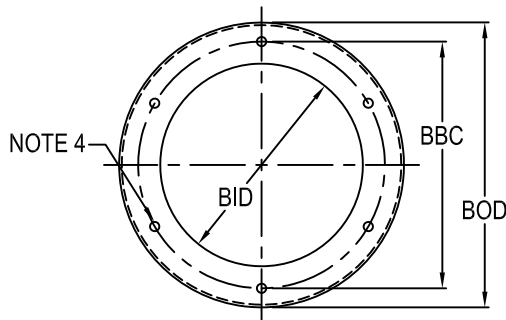
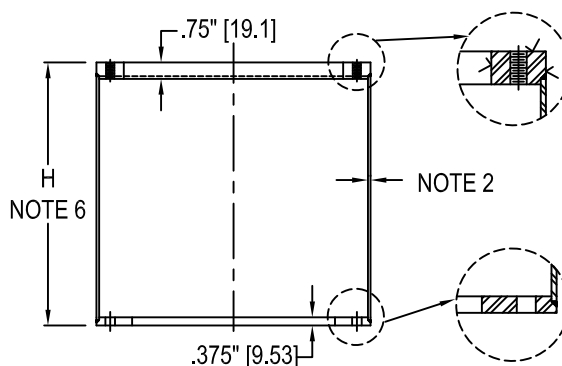
- AES - (12) 3/8"-16 equally spaced, tapped holes GARDSERT™ optional.
AEB - (12) 3/8"-16 equally spaced, Stainless Steel top ring standard, GARDSERT™ optional.

- (12) 5/16" Ø equally spaced, thru holes on top ring
(6) 7/16" Ø equally spaced, thru holes on bottom ring

- Customer I.D. marks available

- H = height required, 2 1/4" minimum

- Extensions are shipped with:
(6) 3/8"-16 x 1" Stainless hex head cap screws (10650198)
(6) 3/8", 2 piece locking washers (10680607)



	TYPE	PART NO.	TOD & BOD	TBC	BBC	TID	BID
*	AE_0829X 8" L868A	AXS0_ _ _ _	8.5"	7.25"	7.25"	6.5"	6.5"
		AXB0_ _ _ _VK	[215.9]	[184.2]	[184.2]	[165.1]	[165.1]
*	AE_1529X 10" L868 See Note 1	AXS1_ _ _ _	10.5"	9.25"	8.25"	8"	6"
		AXB1_ _ _ _VK	[266.7]	[235]	[209.6]	[203.2]	[152.4]
*	AE_2419X 12" L868B	AXS2_ _ _ _	12.5"	11.25"	11.25"	10"	10"
		AXB2_ _ _ _VK	[317.5]	[285.8]	[285.8]	[254]	[254]
*	AE_3519X 15" L868C	AXS3_ _ _ _	15.5"	14.25"	14.25"	13"	12.375"
		AXB3_ _ _ _VK	[393.7]	[362]	[362]	[330.2]	[314.3]

[] = dimensions in metrics; mm.

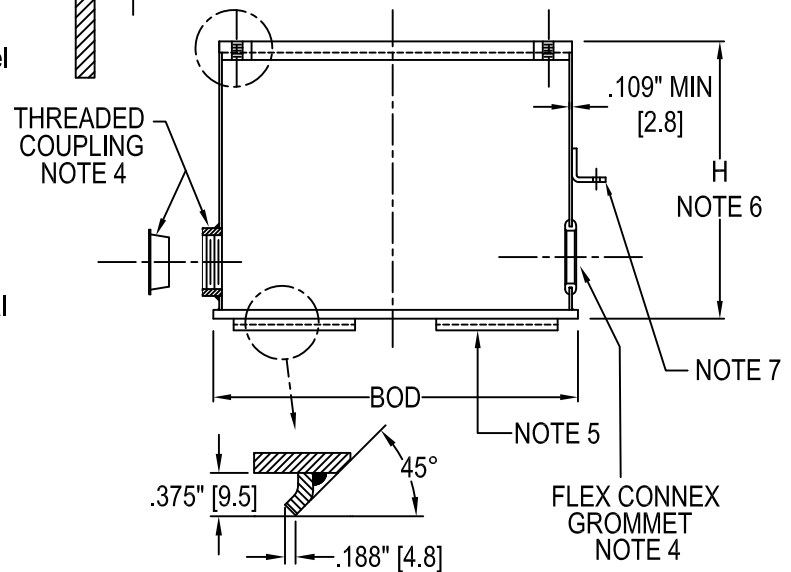
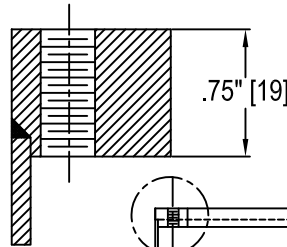
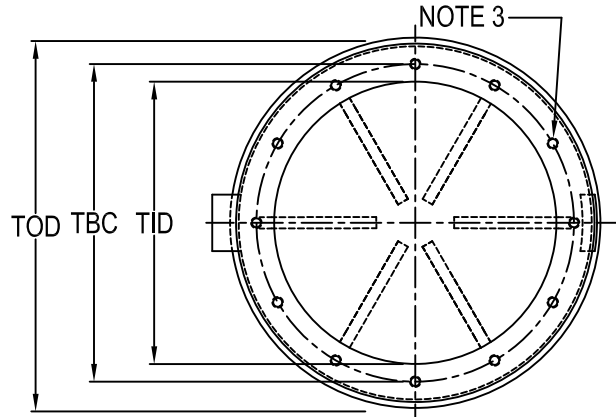
* SEE NOTE 2

L-868 Class 1B

Inset Light base



L-868 Class 1B Inset Light Base



1. Approved and Certified to FAA Advisory Circular AC150/5345-42 (Current Revision) L868 class 1B Size: A=8", B=12", C=15"

* 2. Material to meet 1B requirement
ACS - 12 GA. Min. Thickness 304/18-8 Stainless Steel
ACB - .109" Min. Thickness Class 1A with VEGA™-KOTE proprietary coating

3. ACS - (12) 3/8"-16 equally spaced, tapped holes GARDSERT™ optional.
ACB - (12) 3/8"-16 equally spaced, Stainless Steel top ring standard, GARDSERT™ optional

4. Conduit Openings (minimum 2 for coated bases) are:
 Located 180° apart and 2.5" up from bottom
 Various sizes and locations are available
 Protective plug installed in threaded coupling
 Flex Connex Grommets are shipped separately

5. Anti-Rotation hooks are Standard

6. H = height required
 10" Standard height
 10" and less, NO mid ring

7. Internal/External ground straps are standard

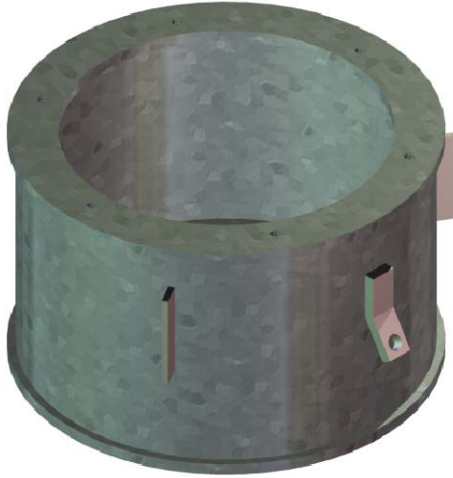
Other Heights Available

TYPE	PART NO.	BOD	TID	TBC	TOD
* L868A 8"	<u>ACS08</u> _____	9"	6.5"	7.25"	8.5"
	<u>ACB08</u> _____VK	[228.6]	[165.1]	[184.2]	[215.9]
* L868B 12"	<u>ACS24</u> _____	13"	10"	11.25"	12.5"
	<u>ACB24</u> _____VK	[330.2]	[254]	[285.8]	[317.5]
* L868C 15"	<u>ACS35</u> _____	16"	13"	14.25"	15.5"
	<u>ACB35</u> _____VK	[406.4]	[330.2]	[362]	[393.7]

[] = dimensions in metrics; mm

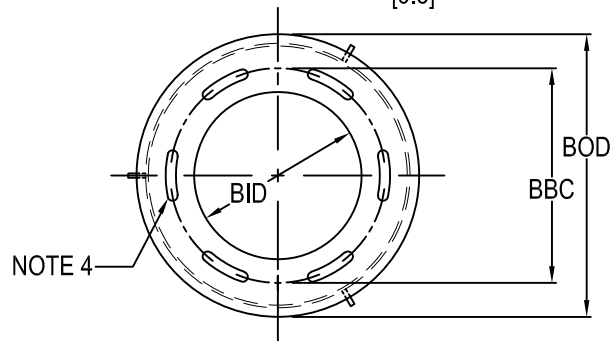
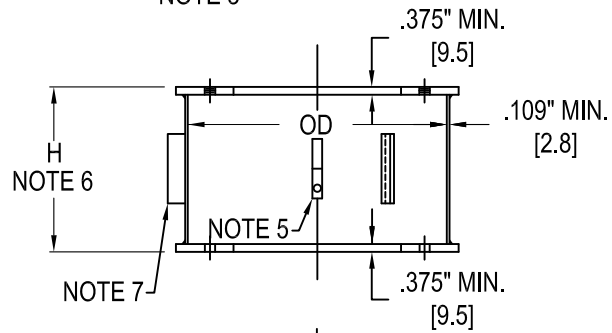
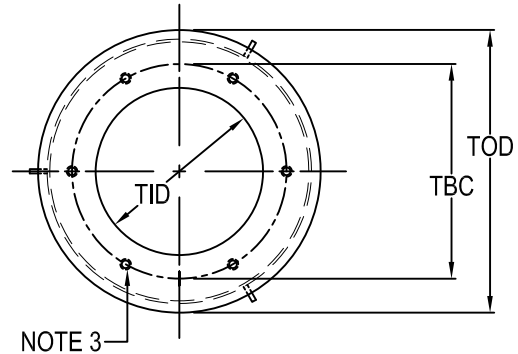
* SEE NOTE 2

Middle Section for L-868 Class 1B multiple section light base



L-868 Class 1B Middle Section

1. Approved and Certified to FAA Advisory Circular AC150/5345-42 (Current Revision) L868 class 1B Size: A=8", B=12", C=15"
- * 2. Material to meet 1B requirement
AES - 12 GA. Min. Thickness 304/18-8 Stainless Steel
AEB - .109" Min. Thickness Class 1A with VEGA™-KOTE proprietary coating
3. ACS - (6) 3/8"-16 equally spaced, tapped holes GARDSERT™ optional, tapped holes are aligned and centered to bottom ring slot
ACB - (6) 3/8"-16 equally spaced, Stainless Steel top ring standard, GARDSERT™ optional, tapped holes are aligned and centered to bottom ring slot
4. (6) 7/16" Ø x 1.75" long slots equally spaced aligned with BBC
5. Stainless Steel Internal/External Ground Straps are standard. Stainless Steel ground straps ordered on "AEB" middle sections are uncoated Copper Lug AWS0919 is optional
6. H = height required
 8" Standard height
 4" Minimum height
 Other Heights Available
7. (3) 3/16" x 3/4" x 3" Antirotational Fins are located at intervals of 120°
8. Middle Sections are shipped with:
 (6) 3/8"-16 x 1" Stainless hex head cap screws (10650198)
 (6) 3/8", 2 piece locking washers (10680607)



	TYPE	PART NO.	OD	TOD & BOD	TBC & BBC	TID & BID
*	L868A 8"	AES4703M	8.5"	9"	6.25"	5.25"
		AEB4703MVK	[215.9]	[228.6]	[159.6]	[134.1]
*	L868B 12"	AES4704M	12.5"	13"	10.25"	9.25"
		AEB4704MVK	[317.5]	[330.2]	[260.4]	[235]
*	L868C 15"	AES4705M	15.5"	16"	13.25"	12.375"
		AEB4705MVK	[393.7]	[406.4]	[336.6]	[314.3]

[] = dimensions in metrics; mm

* SEE NOTE 2